



Fisheries and Oceans  
Canada

Pêches et Océans  
Canada

Canadian  
Coast Guard

Garde côtière  
canadienne

# Notices to Mariners

**Edition No. 06-2025**  
June 27, 2025



Safety First, Service Always

## Monthly Summary of Temporary and Preliminary Notices

Canada 

Notices to Mariners – Monthly Summary of Temporary and Preliminary Notices  
Edition No. 06-2025

Aussi disponible en français :  
Avis aux navigateurs – Sommaire mensuel des avis temporaires et préliminaires  
Édition n° 06-2025

**Published under the Authority of:**

Canadian Coast Guard Programs  
Aids to Navigation and Waterways  
Fisheries and Oceans Canada  
Montreal, QC H2Y 2E7

For more information, contact [DFO.Notmar-Notmar.MPO@dfo-mpo.gc.ca](mailto:DFO.Notmar-Notmar.MPO@dfo-mpo.gc.ca).

© His Majesty the King in Right of Canada,  
as represented by the Minister of Fisheries, Oceans  
and the Canadian Coast Guard, 2025.

Cat. No. Fs151-19E-PDF (Electronic PDF, English)  
ISSN 2561-5106

Cat. No. Fs151-19F-PDF (Electronic PDF, French)  
ISSN 2561-5114

A web version is available here:

<https://www.notmar.gc.ca/temp-pre-monthly> (English)

<https://www.notmar.gc.ca/temp-pre-mensuel> (French)

## Explanatory Notes

**Geographical positions** refer directly to the graduations of the largest scale Canadian Hydrographic Service chart (unless otherwise indicated).

**Bearings** refer to the true compass and are measured clockwise from 000° (North) clockwise to 359°; those relating to lights are from seaward.

**Visibility** of lights is that in clear weather.

**Depths** - The units used for soundings (metres, fathoms or feet) are stated in the title of each chart.

**Elevations** are normally given above Higher High Water, Large Tide (unless otherwise indicated).

### Explanation of Temporary and Preliminary Notices to Mariners

Certain Notices to Mariners appearing in the monthly editions have a (T) or (P) appended to the regular number. These letters indicate that the information contained in the notice is of a temporary or preliminary nature, respectively.

#### Temporary (T) Notices

If a temporary change in conditions affecting navigation exists and if the change will be effective for a period of over three months, a temporary (T) notice will be published. Temporary changes which are effective for periods of less than three months will not normally be published (unless it is of exceptional interest). Otherwise, information will be promulgated as a Navigational Warning (NAVWARN) by the Canadian Coast Guard Marine Communications and Traffic Services (MCTS) Centre(s) in the affected area. (T) notices will be cancelled as necessary.

Please note that (T) notices with an end date will be automatically cancelled once the end date has passed. In the event of a change to these notices, a new Notice to Mariners will be issued.

#### Preliminary (P) Notices

- a. When important changes affecting navigation are to take place in the near future, a Notice to Mariners describing the change will be published, so that mariners will have advance information on the change. Such notices will be designated (P).
- b. When a change in conditions affecting navigation has taken place but full information is not available, a preliminary (P) notice giving available information will be published. This notice will be followed by a regular notice when complete information becomes available. The regular notice will cancel the (P) notice.
- c. When a change has taken place which is too complex to describe in a written notice, a (P) notice giving general information will be published. This notice will explain that follow up action will be taken to update charts by publishing patch corrections, new editions or new charts.

Please note that following the expiry of the 90-day comment or objection period, (P) notices describing proposed changes or intention to discontinue will be automatically cancelled. In the event of a change to these notices, a new Notice to Mariners will be issued.

#### Action Required on Receipt Of (T) & (P) Notices

It is not customary to make permanent corrections to charts and publications from (T) & (P) notices. On receipt of such notices, the information they contain should be noted in pencil on the affected charts and/or publications.

#### Caution

Mariners are reminded that charts and publications are not corrected from (T) & (P) notices when purchased from suppliers. For the list of charts affected by (T) & (P) notices, please refer to the index on page ii of this publication.

## Table of Contents

---

### **Newfoundland and Labrador Coast** **1**

#### Temporary Notices

*306(T)/24	Larkin Point to / à Cape Anguille – Marine Works: Wharf Construction.....	1
*611(T)/24	Great St. Lawrence Harbour and / et Lamaline Harbour – Aid to Navigation Temporarily Discontinued .....	1
*719(T)/24	Burin Peninsula to / à Saint-Pierre – Waterway information .....	1
*1208(T)/24	Lark Harbour and / et York Harbour – Marine Works: Wharf Construction .....	2
*510(T)/25	Head of / Fond de Placentia Bay – Obstruction: Subsurface Moorings.....	2

#### Preliminary Notices

*606(P)/25	Hawkes Bay, Port Saunders, Back Arm – Aid to Navigation to be Discontinued .....	2
------------	--	---

---

### **Atlantic Coast** **3**

#### Temporary Notices

*207(T)/22	Port de Québec – Obstruction .....	3
*411(T)/22	Lac Saint-Pierre – Obstruction: Floating and Falling Debris .....	3
*809(T)/22	Port de Montréal – Waterway Information: Calculation of Under-Keel Clearance .....	3
*1214(T)/22	Cap des Rosiers à/to Chandler – Obstruction: Sunken Barge and Excavator.....	3
*317(T)/23	Baie des Chaleurs / Chaleur Bay – Caution Concerning Aquaculture Sites .....	4
*509(T)/23	St. Marys Bay – Obstruction : Wreck.....	4
*710(T)/23	Port de Montréal – Waterway information – Mooring prohibited .....	4
*711(T)/23	Cap des Rosiers à/to Chandler – Obstruction : Scientific Moorings.....	5
*214(T)/24	Batiscan au/to Lac Saint-Pierre – Waterway Information: Shallow Depths Reported .....	5
*310(T)/24	Mouillages et Installations Portuaires/Anchorages and Harbour Installations - Haute Côte-Nord – Marine Works: Wharf Construction.....	6
*1021(T)/24	Batiscan au/to Lac Saint-Pierre – Waterway Information : Shallow Depth.....	6
*1118(T)/24	Port de Montréal – Shallow Depth Reported.....	7
*1119(T)/24	Batiscan au/to Lac Saint-Pierre – Obstruction: Diving Operations.....	7
*1120(T)/24	Îles de la Madeleine – Obstruction :Submerged Object.....	7
*1121(T)/24	Îles de la Madeleine – Obstruction :Wreck.....	7
*1209(T)/24	Pointe des Monts aux/to Escoumins – Obstruction: Subsurface Moorings.....	7
*1210(T)/24	Wedgeport and Vicinity / et les abords – Aid to Navigation Temporarily Discontinued .....	8
*410(T)/25	Chenal du Havre de la Grande Entrée – Waterway Information: Wharf Closed.....	8
*512(T)/25	Baie des Sept-Îles – Marine Works: Wharf Construction .....	8
*513(T)/25	Port de Québec – Marine Works: Wharf Construction .....	8

#### Preliminary Notices

*415(P)/25	Red Point to / à Guyon Island – Notice of Proposed Changes.....	9
*416(P)/25	Chéticamp to / à Cape St. Lawrence – Light Buoy to be Discontinued .....	9
*417(P)/25	Cap de la Tête au Chien au/to Cap aux Oies – Aid to Navigation to be Abandoned .....	10

**Inland Waters**

**11**

Temporary Notices

*814(T)/16	Main Duck Island to/à Scotch Bonnet Island – Partially Submerged Fixed Steel Barges....	11
*1219(T)/16	Toronto to/à Hamilton – Construction Operations .....	11
*309(T)/17	Pelee Passage to/à la Detroit River – Low Water Levels Reported.....	11
*709(T)/18	Kingston Harbour and Approaches/et les approches – Information Regarding Mooring and Anchoring .....	11
*1210(T)/20	Demarcation Bay to/à Philips Bay – Mobile Offshore Drilling Unit Temporarily Established	12
*810(T)/21	Fort Frances to/à Hostess Island and/et Sandpoint Island – Aids to Navigation Temporarily Discontinued .....	12
*907(T)/21	Lac des Deux Montagnes – Missing Unlit Buoy .....	12
*108(T)/22	Lower Gap to/à Adolphus Reach – Construction Operations Frontenac II Ferry Dock.....	12
*413(T)/22	Detroit River – Waterway Information: Bridge Construction .....	13
*614(T)/22	Canal de la Rive Sud – Bridge Repair Work.....	13
*617(T)/22	Lac Saint-Louis – Aids to Navigation Temporarily Established .....	13
*109(T)/23	Port Hope Harbour – Dredging Operations.....	13
*917(T)/23	Hamilton Harbour – Waterway information - Procedure Changes.....	14
*216(T)/24	Canadian Coast Guard – Obstruction : Scientific Moorings.....	14
*313(T)/24	Havres et Mouillages - Harbours and Anchorages - Côte-Nord/North Shore – Waterway Information: Reduction of Capacity at Mooring Bollards .....	14
*413(T)/24	Lac Saint-Louis – Marine works : Construction and Drilling Operations.....	14
*728(T)/24	Toronto Harbour – Marine Works - Overhead Construction.....	15
*814(T)/24	Hamilton Harbour – Waterway Information – Shallow Depth Reported.....	15
*815(T)/24	Port of Thunder Bay – Obstruction – Lost Anchor .....	15
*910(T)/24	Kingston Harbour and Approaches/et les approches – Construction Operations .....	15
*1124(T)/24	Port of Thunder Bay – Waterway Information: Survey Results .....	16
*1212(T)/24	Nipigon Bay and Approaches/et les approches – Waterway Information: Shallow Depths Reported.....	16
*210(T)/25	Toronto Harbour – Construction Operations.....	17
*418(T)/25	Arctic Archipelago / Archipel de l'Arctique – Obstruction – Subsurface Moorings .....	18
*419(T)/25	Paallavvik to/à Kangiqtugaapik – Obstruction – Scientific Mooring.....	18
*420(T)/25	Clyde Inlet to/à Cape Jameson – Obstruction – Subsurface Mooring .....	18
*421(T)/25	Franklin Bay and/et Darnley Bay – Obstruction – Subsurface Mooring.....	18
*422(T)/25	Prince Albert Sound, Western Portion/ Partie Ouest – Obstruction – Subsurface Mooring.	18
*423(T)/25	Approches to/Approches à Cambridge Bay – Obstruction – Subsurface Buoy and Apparatus .....	19
*515(T)/25	Croil Islands to/à Cardinal – Obstruction: Submerged Object .....	19
*516(T)/25	Lake Ontario/Lac Ontario (Western Portion/Partie Ouest) – Marine Works: Pipeline Installation .....	19
*608(T)/25	Cobourg to/à Oshawa – Waterway Information: Shoal.....	19
*609(T)/25	Toronto Harbour – Marine Works: Underwater Construction .....	19
*610(T)/25	Georgian Bay / Baie Georgienne – Aids to Navigation Temporarily Established .....	20

Preliminary Notices

*517(P)/25	Lac Saint-Louis – Range Lights to be Abandoned .....	21
*424(P)/25	Puvirnituk et les approches / and Approches – Racon to be Discontinued.....	21

---

**Pacific Coast** **22**

---

Temporary Notices

No notices applicable for this edition. ....	22
--	----

Preliminary Notices

*518(P)/25	Fraser River/Fleuve Fraser, Sand Heads to/à Douglas Island – Aid to Navigation to be Discontinued .....	22
------------	---	----

---

**Other (T) & (P) Notices** **23**

---

Temporary Notices

*1105(T)/15	Canada – Safety of Offshore Exploration and Exploitation Vessels .....	23
*217(T)/24	Canadian Coast Guard – Obstruction : Scientific Mooring .....	23
*1027(T)/24	Canadian Coast Guard – Automatic Identification System (AIS) .....	23
*1215(T)/24	Canadian Coast Guard – Automatic Identification System Application Specific Messages (AIS ASM) Trial .....	24

Preliminary Notices

*519(P)/25	Scott Islands – Paper Chart to be Discontinued .....	24
------------	--	----

### List of Charts Affected by (T) & (P) Notices

Chart No.	Pages	Chart No.	Pages	Chart No.	Pages
1220	8	2085	15, 17, 19	4654	2
1226	6	2086	11	4679	2
1234	10	2123	11	4682	1
1236	7	2201	20	4839	2
1310	3, 4, 7	2261	20	4950	7
1312	3	2291	20	4954	8
1313	5, 6, 7	2312	16	5510	21
1316	3, 8	2314	15, 16	6108	12
1429	13	3490	22	7000	18
1430	13, 14, 21	3625	24	7053	18
1434	19	4118	4	7565	18
1510	12	4244	8	7661	12
2017	11, 15	4374	9	7665	18
2018	12	4452	14	7668	18
2053	13	4464	9	7750	19
2058	19	4485	3, 5	14853 (U.S.)	13
2060	11	4486	4		
2067	14, 15	4625	1		
2077	19	4642	1		

## Newfoundland and Labrador Coast

### Temporary Notices

#### **\*306(T)/24 Larkin Point to / à Cape Anguille – Marine Works: Wharf Construction**

Reference chart: 4682

Wharf demolition and breakwater reconstruction operations underway in Codroy, NL at the following coordinates:

47° 52' 50.0"N 59° 23' 49.0"W

47° 52' 46.0"N 59° 23' 52.0"W

47° 52' 53.0"N 59° 24' 11.0"W

Caution.

(NW-N-0161-24)

#### **\*611(T)/24 Great St. Lawrence Harbour and / et Lamaline Harbour – Aid to Navigation Temporarily Discontinued**

Reference chart: 4642

The following aid to navigation is temporarily discontinued:

Aid Name	LL #	Position
St. Lawrence Wharf	73.1	46° 54' 59.1"N 55° 23' 20.8"W

(N2024-093T)

#### **\*719(T)/24 Burin Peninsula to / à Saint-Pierre – Waterway information**

Reference chart: 4625

The Canadian Armed Forces has confirmed the presence of high explosive containing aerial bombs of varying sizes at the sites of the shipwrecks of the USS Truxtun, near Lawn Point, and the USS Pollux, near Chambers Cove.

Positions: 46° 52' 42.1"N 055° 26' 26.2"W and 46° 52' 49.2"N 055° 29' 24.7"W

At this time the Canadian Armed Forces have determined that the health and safety risks associated with removal of these munitions are too great and in place detonation is not advisable.

Mariners are advised to keep a safe distance from these shipwrecks.

Caution.

(NW-N-0665-24)

**\*1208(T)/24 Lark Harbour and / et York Harbour – Marine Works: Wharf Construction**

Reference chart: 4654

Wharf reconstruction underway in Lark Harbour in the vicinity of 49° 06.069'N 058° 21.866'W.

Caution.

(NW-N-1171-24)

**\*510(T)/25 Head of / Fond de Placentia Bay – Obstruction: Subsurface Moorings**

Reference chart: 4839

Inshore subsurface moorings installed in the following coordinates:

47° 44.270'N 54° 10.840'W

47° 45.350'N 54° 09.730'W

47° 44.640'N 54° 07.580'W

47° 43.400'N 54° 08.430'W

Each mooring is marked with a yellow surface buoy with a yellow light flashing every 4 seconds.

(NW-N-0258-25)

**Preliminary Notices**

**Atlantic Region**

Comment Submission

Comments on proposed changes in preliminary (P) notices are solicited from mariners and other interested parties within three months of the initial publication date. Following this date, the notices will be cancelled. Any objections raised must state the facts on which they are based and should include supporting information on safety, commerce and public benefit.

Comments should be directed to the following:

Superintendent,  
Aids to Navigation & Waterways  
Canadian Coast Guard, Atlantic Region  
P.O. Box 1000  
50 Discovery Drive  
Dartmouth, NS B2Y 3Z8  
Telephone: (506) 636-4708  
Email: [DFO.CCGATLaidstoNavDiscont-AidesalanavSupprATLGCC.MPO@dfo-mpo.gc.ca](mailto:DFO.CCGATLaidstoNavDiscont-AidesalanavSupprATLGCC.MPO@dfo-mpo.gc.ca)

**\*606(P)/25 Hawkes Bay, Port Saunders, Back Arm – Aid to Navigation to be Discontinued**

Reference chart: 4679

The Canadian Coast Guard proposes to permanently discontinue the following aid to navigation:

Aid Name	LL #	Position
Back Arm North Wharf Light	211.81	50° 42' 27.7"N 057° 20' 55.2"W

Initial publication date: Friday, June 27, 2025

[Comment submission deadline](#): Thursday, September 25, 2025

(N2024-258)

## Atlantic Coast

### Temporary Notices

#### **\*207(T)/22 Port de Québec – Obstruction**

Reference chart: 1316

Power boat 6 metres in length reported sunk at 46° 43.830'N 071° 20.000'W.

(NW-Q-1348-21)

#### **\*411(T)/22 Lac Saint-Pierre – Obstruction: Floating and Falling Debris**

Reference chart: 1312

Floating and falling debris reported beneath the bridge located at 46° 04.783'N 073° 09.205'W. The bridge is marked with yellow buoys suspended at mid-height between the deck and the water level. Warning signs installed above.

(NW-Q-1266-19)

#### **\*809(T)/22 Port de Montréal – Waterway Information: Calculation of Under-Keel Clearance**

Reference chart: 1310

Canadian Coast Guard Marine Communications and Traffic Services has been using all Canadian Hydrographic Service water-level stations for the calculation of passage authorizations in the Sorel–Montreal sector of the navigational waterway, namely Sorel, Contrecoeur, Varennes, Montreal-Frontenac and Montreal-Jetty No. 1.

In light of the particular features of the navigational waterway in the portion between buoys M84 (downstream of the municipality of Verchères) and M157 (opposite to the Port of Montreal, section 109) as well as the No. 1 Anchorage Pointe-aux-Tremble, it was agreed to adjust upward the available water column by 10 cm in this portion.

The minimum water column in this portion of the navigational waterway as per the Varennes hydrographic station, obtained after adjustment, will be used for the calculation of under-keel clearance.

(NW-Q-0776-22)

#### **\*1214(T)/22 Cap des Rosiers à/to Chandler – Obstruction: Sunken Barge and Excavator**

Reference chart: 4485

Sunken barge and excavator reported at 48° 35.1'N 064° 08.1'W. Barge is 18 metres by 7 metres.

(NW-Q-1709-22)

**\*317(T)/23 Baie des Chaleurs / Chaleur Bay – Caution Concerning Aquaculture Sites**

Reference chart: 4486

Vicinity	Positions	Description
Cascapedia Bay	48° 07' 10.7"N 066° 01' 18.2"W 48° 07' 31.1"N 066° 00' 30.8"W 48° 07' 00.8"N 065° 59' 59.9"W 48° 06' 39.7"N 066° 00' 47.0"W	Aquaculture site with non-compliant buoyage with surface and submerged equipment.
Cascapedia Bay	48° 07' 22.0"N 065° 55' 12.0"W 48° 07' 22.0"N 065° 53' 14.0"W 48° 06' 33.0"N 065° 53' 14.0"W 48° 06' 33.0"N 065° 55' 12.0"W	Aquaculture site with non-compliant buoyage with submerged equipment.
Cascapedia Bay	48° 05' 24.2"N 066° 01' 42.8"W 48° 06' 11.2"N 066° 00' 07.8"W 48° 05' 36.2"N 065° 59' 29.8"W 48° 04' 49.2"N 066° 01' 04.8"W	Aquaculture site marked with non-compliant buoyage with surface and submerged equipment.
Tracadigache Bay	48° 05' 12.0"N 066° 12' 02.6"W 48° 05' 12.0"N 066° 11' 00.0"W 48° 04' 30.0"N 066° 11' 00.0"W 48° 04' 30.0"N 066° 12' 02.6"W	Aquaculture site with temporarily non-compliant buoyage.

(NW-Q-0769-16, NW-Q-0770-16, NW-Q-0783-16, NW-Q-0789-16)

**\*509(T)/23 St. Marys Bay – Obstruction : Wreck**

Reference chart: 4118

Sunken 30 by 90 feet barge with 500 feet of tow line still attached at the following position:  
44° 16' 24.9"N 066° 28' 44.9"W Caution.

(NW-M-0529-23)

**\*710(T)/23 Port de Montréal – Waterway information – Mooring prohibited**

Reference chart: 1310

Mooring indefinitely prohibited at section 31 of the Port of Montreal.

(NW-Q-0476-23)

**\*711(T)/23 Cap des Rosiers à/to Chandler – Obstruction : Scientific Moorings**

Reference chart: 4485

Six sub-surface scientific moorings established at:

48 37.390N 064 07.734W  
48 43.925N 064 08.099W  
48 41.868N 064 04.632W  
48 39.987N 064 00.959W  
48 38.023N 063 57.919W  
48 36.274N 063 54.923W

Top float 24 metres below the surface.

(NW-Q-0662-23)

**\*214(T)/24 Batiscan au/to Lac Saint-Pierre – Waterway Information: Shallow Depths Reported**

Reference: Notice 313(T)/23 is cancelled (Chart 1313).

Reference chart: 1313

A shallower depth of 10.4 metres is located at the following positions:

46° 19.997' N      072° 32.698' W  
46° 19.993' N      072° 32.675' W  
46° 19.983' N      072° 32.682' W  
46° 19.980' N      072° 32.703' W  
46° 19.985' N      072° 32.718' W

A shallower depth of 10.6 metres is located at the following positions:

46° 19.978' N      072° 32.731' W  
46° 19.979' N      072° 32.701' W  
46° 19.970' N      072° 32.703' W  
46° 19.971' N      072° 32.732' W

A shallower depth of 10.4 metres is located at the following positions:

46° 19.983' N      072° 32.785' W  
46° 19.982' N      072° 32.747' W  
46° 19.973' N      072° 32.752' W  
46° 19.972' N      072° 32.768' W  
46° 19.971' N      072° 32.792' W

(NW-Q-1338-23)

**\*310(T)/24 Mouillages et Installations Portuaires/Anchages and Harbour Installations -  
Haute Côte-Nord – Marine Works: Wharf Construction**

Reference chart: 1226

Wharf repair works are taking place daily between 1100 UTC and 2100 UTC at wharves 1, 2 and 3 of the Port-Cartier Harbour.

Barge and safety boat on site.

(NW-C-0316-24)

**\*1021(T)/24 Batiscan au/to Lac Saint-Pierre – Waterway Information : Shallow Depth**

Reference chart: 1313

Shallow depths reported in the port of Trois-Rivières at the following coordinates:

Shallow depth of 10.4 metres located at Section 13:

- 46° 20.027'N 072° 32.614'W
- 46° 20.025'N 072° 32.608'W
- 46° 20.034'N 072° 32.597'W
- 46° 20.037'N 072° 32.603'W

Shallow depth of 10.0 metres located at Section 14 and a portion of Section 15:

- 46° 19.990'N 072° 32.795'W
- 46° 19.990'N 072° 32.738'W
- 46° 20.004'N 072° 32.672'W
- 46° 20.013'N 072° 32.648'W
- 46° 20.017'N 072° 32.765'W

Shallow depth of 10.3 metres located at Section 16:

- 46° 19.964'N 072° 32.795'W
- 46° 19.976'N 072° 32.785'W
- 46° 19.987'N 072° 32.738'W
- 46° 19.973'N 072° 32.740'W

Shallow depth of 10.2 metres located at Section 16:

- 46° 19.997'N 072° 32.789'W
- 46° 19.996'N 072° 32.766'W
- 46° 19.964'N 072° 32.795'W
- 46° 19.965'N 072° 32.821'W

Shallow depth of 10.5 metres located at Section 16:

- 46° 19.968'N 072° 32.704'W
- 46° 19.970'N 072° 32.745'W
- 46° 19.976'N 072° 32.741'W
- 46° 19.978'N 072° 32.695'W

Shallow depth of 10.2 metres located at Section 16:

- 46° 19.985'N 072° 32.706'W
- 46° 19.979'N 072° 32.699'W
- 46° 19.979'N 072° 32.677'W
- 46° 19.993'N 072° 32.660'W
- 46° 20.000'N 072° 32.688'W

Shallow depth of 10.2 metres located at Section 17:

- 46° 19.852'N 072° 32.772'W
- 46° 19.851'N 072° 32.768'W
- 46° 19.845'N 072° 32.774'W
- 46° 19.846'N 072° 32.775'W

Shallow depth of 10.5 metres located at Section 19:

- 46° 19.830'N 072° 32.785'W
- 46° 19.831'N 072° 32.787'W
- 46° 19.840'N 072° 32.780'W
- 46° 19.839'N 072° 32.778'W

Shallow depth of 10.6 metres located at Section 19:

- 46° 19.786'N 072° 32.824'W
- 46° 19.801'N 072° 32.813'W
- 46° 19.798'N 072° 32.809'W
- 46° 19.782'N 072° 32.819'W

Shallow depth of 10.5 metres located at Section 20:

- 46° 19.728'N 072° 32.874'W
- 46° 19.727'N 072° 32.870'W
- 46° 19.738'N 072° 32.859'W
- 46° 19.739'N 072° 32.864'W

(NW-C-1191, 1342, 1871, 1872-24)

**\*1118(T)/24 Port de Montréal – Shallow Depth Reported**

Reference chart: 1310

Shallower depth of 10,4 metres located at the following coordinates: 45° 30' 18.9"N 073° 32' 48.3"W.

(NW-C-1866-24)

**\*1119(T)/24 Batiscan au/to Lac Saint-Pierre – Obstruction: Diving Operations**

Reference chart: 1313

Diving operations taking place in Port of Trois-Rivières Monday to Friday from 1100 UTC to 2100 UTC at wharf 17.

(NW-C-2820-24)

**\*1120(T)/24 Îles de la Madeleine – Obstruction :Submerged Object**

Reference chart: 4950

Rocks and dolosses have been located 7 metres from the pierhead of the southern breakwall at a depth of 2 metres at the following coordinates:

47° 23.304'N 061° 47.513'W

47° 23.301'N 061° 47.507'W

47° 23.308'N 061° 47.517'W

47° 23.299'N 061° 47.500'W

47° 23.298'N 061° 47.493'W

(NW-C-1877-24)

**\*1121(T)/24 Îles de la Madeleine – Obstruction :Wreck**

Reference chart: 4950

The vessel SS Corfu Island has been assessed as a hazard to public safety by Canadian Coast Guard under the *Wrecked, Abandoned or Hazardous Vessels Act*. The bow of the wreck is located on the beach at position 47° 20.813'N 061° 57.014'W and the wreck extends seaward in a southwesterly direction over 137.5 metres in length and 17.5 metres in width.

It is forbidden to access or climb it for any reason. Mariners are requested to keep a wide berth from the wreckage.

(NW-C-1861-24)

**\*1209(T)/24 Pointe des Monts aux/to Escoumins – Obstruction: Subsurface Moorings**

Reference chart: 1236

Subsurface scientific moorings temporarily established at the following coordinates:

Moorings E1: 48° 53.322'N 068° 06.180'W (depth of 319 metres)

Moorings W1: 48° 48.033'N 068° 23.991'W (depth of 355 metres)

(NW-C-1823-24)

**\*1210(T)/24 Wedgeport and Vicinity / et les abords – Aid to Navigation Temporarily Discontinued**

Reference chart: 4244

The following aid to navigation is temporarily discontinued:

Aid Name	LL #	Position
Pinkneys Point Fog Signal	278.2	43° 42' 11.6"N 066° 03' 12.1"W

(F2024-060T)

**\*410(T)/25 Chenal du Havre de la Grande Entrée – Waterway Information: Wharf Closed**

Reference chart: 4954

Wharf 406 of Grande-Entrée is closed. Pollution containment booms in place.

Stay clear. Minimum wake.

(NW-C-2172-24)

**\*512(T)/25 Baie des Sept-Îles – Marine Works: Wharf Construction**

Reference chart: 1220

Construction operations taking place daily on the Mgr-Blanche Dock. Barges, cranes and work boats on site.

Minimum wake and wide berth of 300 metres requested.

(NW-C-0623-25)

**\*513(T)/25 Port de Québec – Marine Works: Wharf Construction**

Reference chart: 1316

Wharf construction operations taking place in the vicinity of 46° 49.872'N 071° 09.994'W.

Minimum wake requested.

(NW-C-1155-25)

**Preliminary Notices**

**Atlantic Region**

Comment Submission

Comments on proposed changes in preliminary (P) notices are solicited from mariners and other interested parties within three months of the initial publication date. Following this date, the notices will be cancelled. Any objections raised must state the facts on which they are based and should include supporting information on safety, commerce and public benefit.

Comments should be directed to the following:

Superintendent,  
Aids to Navigation & Waterways  
Canadian Coast Guard, Atlantic Region  
P.O. Box 1000  
50 Discovery Drive  
Dartmouth, NS B2Y 3Z8  
Telephone: (506) 636-4708  
Email: [DFO.CCGATLAidstoNavDiscont-AidesalanavSupprATLGCC.MPO@dfo-mpo.gc.ca](mailto:DFO.CCGATLAidstoNavDiscont-AidesalanavSupprATLGCC.MPO@dfo-mpo.gc.ca)

**\*415(P)/25 Red Point to / à Guyon Island – Notice of Proposed Changes**

Reference chart: 4374

The Canadian Coast Guard proposes to permanently change the following aids to navigation:

Aid Name	LL #	Position	Proposed Changes
<b>Floating Aids</b>			
Fourchu light and whistle buoy N14	745	45° 42' 00.2"N 060° 12' 45.6"W	Discontinue the whistle. Reduce the size of the buoy. Increase lantern intensity.
Fourchu light and bell buoy NC2	746	45° 42' 57.2"N 060° 13' 07.6"W	Discontinue the bell. Reduce the size of the buoy.

Initial publication date: Friday, April 25, 2025

[Comment submission deadline](#): Thursday, July 24, 2025

(G2025-027)

**\*416(P)/25 Chéticamp to / à Cape St. Lawrence – Light Buoy to be Discontinued**

Reference chart: 4464

The Canadian Coast Guard proposes to permanently discontinue the following aid to navigation:

Aid Name	LL #	Position
Pleasant Bay light and bell buoy VC	860.5	46° 50' 30.1"N 060° 48' 17.6"W

Initial publication date: Friday, April 25, 2025

[Comment submission deadline](#): Thursday, July 24, 2025

(G2025-026)

**Central Region: St. Lawrence Sector**

Comment Submission

Comments on proposed changes in preliminary (P) notices are solicited from mariners and other interested parties within three months of the initial publication date. Following this date, the notices will be cancelled. Any objections raised must state the facts on which they are based and should include supporting information on safety, commerce and public benefit.

Comments should be directed to the following:

Superintendent  
Aids to Navigation & Waterways  
Canadian Coast Guard, Central Region  
1550 D'Estimauville Avenue  
Québec, QC G1J 5E9  
Telephone: (418) 648-7450  
Emails:  
St. Lawrence Region: [DFO.AtoNStLawrence-StLaurentAalaN.MPO@dfo-mpo.gc.ca](mailto:DFO.AtoNStLawrence-StLaurentAalaN.MPO@dfo-mpo.gc.ca)  
Great Lakes Region:  
[DFO.CCGCentralAtoNGreatLakes-GrandsLacsAalaNCentreGCC.MPO@dfo-mpo.gc.ca](mailto:DFO.CCGCentralAtoNGreatLakes-GrandsLacsAalaNCentreGCC.MPO@dfo-mpo.gc.ca)

**\*417(P)/25 Cap de la Tête au Chien au/to Cap aux Oies – Aid to Navigation to be Abandoned**

Reference chart: 1234

The Canadian Coast Guard proposes to permanently abandon the following aid to navigation:

Aid Name	LL #	Position
Îles du Pot à l'Eau-de-Vie	1827	47° 52' 20.5"N 069° 40' 52.7"W

The structure will remain.

Initial publication date: Friday, April 25, 2025

[Comment submission deadline](#): Thursday, July 24, 2025

(Q2025-037)

## Inland Waters

### Temporary Notices

#### **\*814(T)/16 Main Duck Island to/à Scotch Bonnet Island – Partially Submerged Fixed Steel Barges**

Reference chart: 2060

There are 3 partially submerged fixed steel barges in North end of West Lake (43° 57' 02.3"N 077° 20' 12.8"W), which have been reported just below the water line.

Barges are marked with cautionary buoys.

(NOTSHIP C1641/14)

#### **\*1219(T)/16 Toronto to/à Hamilton – Construction Operations**

Reference chart: 2086

Construction operations taking place from November 14, 2016 until approximately 2026 at Lakeview Water Treatment Plant between Marie Curtis Park and Serson Creek. A variety of equipment will be used to expand the land mass along the shoreline. Landfill and 3 islands will be lit and marked.

(NOTSHIP C2533/16)

#### **\*309(T)/17 Pelee Passage to/à la Detroit River – Low Water Levels Reported**

Reference chart: 2123

Low water levels have been reported from the south end of the entrance to Sturgeon Creek Harbour northward.

Annette Winter  
Project and Divestiture Officer  
Small Craft Harbours  
Fisheries and Oceans Canada

Canada Centre for Inland Waters (CCIW)  
867 Lakeshore Road  
Burlington, ON L7S 1A1  
Telephone: (905) 315-5286  
Email: [annette.winter@dfo-mpo.gc.ca](mailto:annette.winter@dfo-mpo.gc.ca)

(NOTSHIP C58/13)

#### **\*709(T)/18 Kingston Harbour and Approaches/et les approches – Information Regarding Mooring and Anchoring**

Reference: Notice 309(T)/14 is cancelled.

Reference chart: 2017

All mooring or anchoring within the public port of Kingston is prohibited outside of designated marina areas until further notice without authorization from the port official.

Inquiries are to be directed to Transport Canada at (416) 952-0475.

**\*1210(T)/20 Demarcation Bay to/à Philips Bay – Mobile Offshore Drilling Unit Temporarily Established**

Reference: Notice 616(T)/07 is cancelled.

Reference chart: 7661

The unmanned mobile offshore drilling unit “SDC” continues to be temporarily established at 69° 24.71’N 138° 53.76’W. The structure is 202.4 metres long and 53 metres wide.

For information, contact Captain Connelly at 1-250-598-4513 or 1-250-744-9818 or e-mail at [doncon@islandnet.com](mailto:doncon@islandnet.com) or [dcmarine@shaw.ca](mailto:dcmarine@shaw.ca).

**\*810(T)/21 Fort Frances to/à Hostess Island and/et Sandpoint Island – Aids to Navigation Temporarily Discontinued**

Reference chart: 6108

The following aids to navigation are temporarily discontinued:

Aid Name	LL #	Position
Noden Causeway East	1465	48° 39’ 08.5”N 093° 18’ 47.6”W
Noden Causeway West	1466	48° 39’ 08.5”N 093° 18’ 49.1”W

(D2021-026T, 027T)

**\*907(T)/21 Lac des Deux Montagnes – Missing Unlit Buoy**

Reference chart: 1510

The following unlit buoy is currently missing and will not be replaced before the 2022 navigation season:

Aid Name	LL #	Position
Chenal Saint-Placide buoy HJ17	6251.68	45° 31’ 20.7”N 074° 12’ 25.1”W

(NW-Q-1526-20)

**\*108(T)/22 Lower Gap to/à Adolphus Reach – Construction Operations Frontenac II Ferry Dock**

Reference chart: 2018

Construction operations are taking place daily during daylight hours at the Millhaven and Stella ferry docks. Temporary docks will be installed in the vicinity of the ferry docks. Docks will be marked with buoys and lit with amber lights.

(NW-C-2916-17)

**\*413(T)/22 Detroit River – Waterway Information: Bridge Construction**

Reference chart: 14853 (U.S.)

Bridge construction operations taking place in an area bounded by:

42° 17.200'N 083° 05.633'W  
42° 17.183'N 083° 05.600'W  
42° 17.067'N 083° 05.667'W  
42° 17.000'N 083° 05.717'W  
42° 17.017'N 083° 05.750'W  
42° 17.100'N 083° 05.667'W

Unauthorized entry prohibited.

(NW-C-0151-22)

**\*614(T)/22 Canal de la Rive Sud – Bridge Repair Work**

Reference chart: 1429

Repair work in progress at the Honoré-Mercier Bridge (upstream) between Lasalle and Kahnawake. Bridge deck installed under the bridge span.

(NW-Q-1810-19)

**\*617(T)/22 Lac Saint-Louis – Aids to Navigation Temporarily Established**

Reference chart: 1430

Six yellow lighted buoys marking a 400 metres breakwater awash temporarily established at the following coordinates:

45° 20' 44.5"N 073° 50' 32.9"W	45° 21' 00.3"N 073° 50' 11.6"W
45° 20' 47.7"N 073° 50' 29.4"W	45° 21' 05.4"N 073° 50' 07.6"W
45° 20' 50.0"N 073° 50' 24.1"W	45° 21' 11.8"N 073° 50' 04.6"W

(NW-Q-0579-22)

**\*109(T)/23 Port Hope Harbour – Dredging Operations**

Reference: Notice 809(T)/18 is cancelled.

Reference chart: 2053

Dredging and wall repair operations in Port Hope Harbour. Entrance to the western basin is blocked. Caution.

**\*917(T)/23 Hamilton Harbour – Waterway information - Procedure Changes**

Reference: Notice \*713(T)/23 is cancelled.

Reference chart: 2067

Since July 1st 2023, commercial vessels exiting the Hamilton Harbour are to provide advanced notice. Public Service and Procurement Canada is requesting four calls to the Bridge Master on VHF Channel 16:

A call 2 hours in advance of departure;

A call 1 hour in advance of departure;

A call when departing the pier;

A call when lining up in the canal.

(NW-C-1600-23)

**\*216(T)/24 Canadian Coast Guard – Obstruction : Scientific Moorings**

Scientific moorings established at position 71° 58' 01.2"N 095° 03' 52.8"W. Least depth 122.8 metres.

(NAVAREA XVIII 32/2011)

**\*313(T)/24 Havres et Mouillages - Harbours and Anchorages - Côte-Nord/North Shore –  
Waterway Information: Reduction of Capacity at Mooring Bollards**

Reference chart: 4452

Capacity reduced to 10 metric tons for bollards B01, B10, B12, B14 and B17 and 20 metric tons for bollards B03 to B09, B11, B13, B15, B16 and B18 at Natashquan public wharf. Bollard B02 is still out of order.

(NW-C-0292-24)

**\*413(T)/24 Lac Saint-Louis – Marine works : Construction and Drilling Operations**

Reference: Notice 312(T)/24 is cancelled (Chart 1430).

Reference chart: 1430

Ongoing construction and drilling operations are taking place in the vicinity of the Île aux Tourtes bridge. Barges and boats are on site.

Lit steel pile installed at 45° 25' 15.4"N 73° 58' 58.0"W showing 2 meters above the surface.

Suspended platform installed at 45° 25' 14.0"N 73° 58' 44.0"W, reducing bridge clearance by 4 meters.

Minimum wake.

(NW-C-0336-24)

**\*728(T)/24 Toronto Harbour – Marine Works - Overhead Construction**

Reference: Notice 415(T)/23 is cancelled (Chart 2085).

Position : 43° 37' 44.3"N 079° 25' 04.3"W

Overhead construction taking place in the North Marina of Ontario Place between West Island and East Island. Waterway closed to marine traffic.

**\*814(T)/24 Hamilton Harbour – Waterway Information – Shallow Depth Reported**

Reference chart: 2067

The southern section of the Pier 10 slip south of 43° 16' 26.1"N 079° 51' 01.9"W does not have the minimum seaway draft.

Mariners are to contact the Hamilton Harbour Master's office at 1 (905) 525-3412 to obtain soundings.

(NW-C-2395-23)

**\*815(T)/24 Port of Thunder Bay – Obstruction – Lost Anchor**

Reference chart: 2314

Anchor and chain lost at the following coordinates:

48° 19' 24.0"N 089° 09' 30.0"W

(NW-C-1623-24)

**\*910(T)/24 Kingston Harbour and Approaches/et les approches – Construction Operations**

Reference: Notice 1012(T)/20 is cancelled (Chart 2017).

Reference chart: 2017

Wharf construction is taking place daily from 1100 UTC to 2300 UTC at the Kingston-Wolfe Island ferry terminal. The ferry remains operational. Vessels are not permitted to dock on the south side. The construction area is marked by yellow buoys equipped with yellow flashing lights.

**\*1124(T)/24 Port of Thunder Bay – Waterway Information: Survey Results**

Reference chart: 2314

Post dredging survey reports depths in the navigable channel of the Mission River have been dredged to a minimum depth of 8.25 metres. The area is delimited by the following coordinates:

Pt 1: 48° 21.924'N 089° 13.938'W	Pt 15: 48° 21.852'N 089° 13.968'W
Pt 2: 48° 21.864'N 089° 13.920'W	Pt 16: 48° 21.864'N 089° 13.944'W
Pt 3: 48° 21.834'N 089° 13.908'W	Pt 17: 48° 21.888'N 089° 13.950'W
Pt 4: 48° 21.804'N 089° 13.902'W	Pt 18: 48° 21.948'N 089° 13.974'W
Pt 5: 48° 21.732'N 089° 13.860'W	Pt 19: 48° 21.984'N 089° 13.998'W
Pt 6: 48° 21.678'N 089° 13.812'W	Pt 20: 48° 22.044'N 089° 14.058'W
Pt 7: 48° 21.636'N 089° 13.758'W	Pt 21: 48° 22.068'N 089° 14.100'W
Pt 8: 48° 21.570'N 089° 13.656'W	Pt 22: 48° 22.092'N 089° 14.070'W
Pt 9: 48° 21.558'N 089° 13.674'W	Pt 23: 48° 22.062'N 089° 14.034'W
Pt 10: 48° 21.624'N 089° 13.776'W	Pt 24: 48° 22.008'N 089° 13.986'W
Pt 11: 48° 21.642'N 089° 13.800'W	Pt 25: 48° 21.972'N 089° 13.968'W
Pt 12: 48° 21.672'N 089° 13.836'W	Pt 26: 48° 21.966'N 089° 13.950'W
Pt 13: 48° 21.702'N 089° 13.884'W	Pt 27: 48° 21.930'N 089° 13.932'W
Pt 14: 48° 21.720'N 089° 13.920'W	

(NW-C-3060-24)

**\*1212(T)/24 Nipigon Bay and Approaches/et les approches – Waterway Information:  
Shallow Depths Reported**

Reference chart: 2312

Shallow depths reported at the following coordinates:

48° 55.084'N 088° 12.705'W :	34.41 metres
48° 50.163'N 088° 07.517'W :	47.39 metres
48° 47.846'N 088° 05.353'W :	40.96 metres
48° 46.635'N 088° 05.030'W :	33.89 metres
48° 45.630'N 088° 05.071'W :	8.72 metres
48° 44.243'N 088° 05.666'W :	20.05 metres

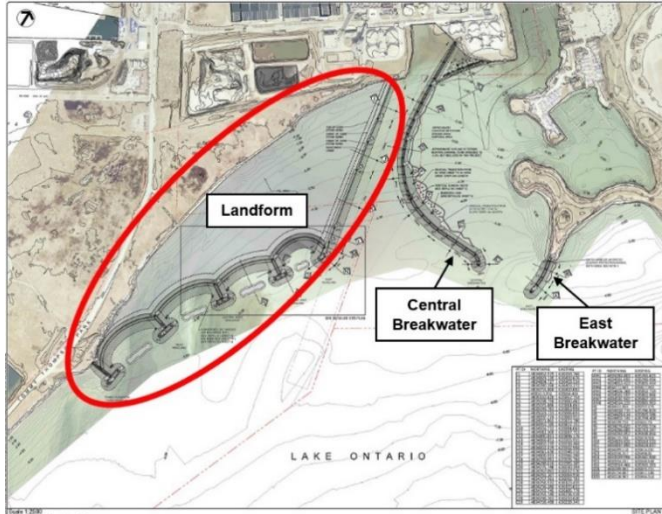
(NW-C-1969-24)

**\*210(T)/25 Toronto Harbour – Construction Operations**

Reference chart: 2085

Reference: Notice 512(T)/23 is cancelled (Chart 2085).

Construction is taking place at Ashbridge's Bay and consists of the construction of two breakwaters and of a landform. A variety of equipment are being used, including tug boats and barges. Temporary aids to navigation are on site during construction. The operations are scheduled to take at the following positions:.



**Breakwater construction operations**

43° 39' 20.7"N 079° 18' 48.1"W

Phase 1: Completed

Phase 2: 2021-04-01 through 2025-05-31

Phase 3: 2021-04-01 through 2025-05-31

**Landform construction operations**

43° 39' 01.4"N 079° 19' 01.9"W

Implementation of the shoreline infill area is expected to take approximately five years.

Mariners are requested to keep out of the construction zone.

**\*418(T)/25 Arctic Archipelago / Archipel de l'Arctique – Obstruction – Subsurface Moorings**

Reference chart: 7000

Scientific subsurface moorings at the following coordinates:

Moorings A:	71° 37.87' N 157° 19.58'W	Top float 65 metres.
Moorings B:	71° 25.33'N 152° 44.10'W	Top float 77 metres.
Moorings C:	70° 50.09'N 146° 23.56'W	Top float 58 metres.
Moorings BGOS-A	75° 00.01'N 150° 00.00'W	Top float 30 metres. Depth of 3826 metres.
Moorings BGOS-D	73° 59.64'N 139° 58.95'W	Top float 30 metres. Depth of 3504 metres.
Moorings BGOS-B	77° 59.99'N 150° 00.00'W	Top float 30 metres. Depth of 3824 metres.

(NAVAREA XVII 77/2016, 4/2022)

**\*419(T)/25 Paallavvik to/à Kangiqtugaapik – Obstruction – Scientific Mooring**

Reference chart: 7053

Scientific subsurface mooring at position 69° 54.66' N 066° 48.42'W. Top float 221 metres.

(NAVAREA XVIII 56/2021)

**\*420(T)/25 Clyde Inlet to/à Cape Jameson – Obstruction – Subsurface Mooring**

Reference chart: 7565

Scientific subsurface mooring at position 71° 08.07' N 070° 49.51'W. Top float 248 metres.

(NAVAREA XVIII 113/2022)

**\*421(T)/25 Franklin Bay and/et Darnley Bay – Obstruction – Subsurface Mooring**

Reference chart: 7665

Scientific subsurface mooring at position 70° 02.434' N 126° 18.404'W. Top float 223 metres.

(NAVAREA XVII 92/2019)

**\*422(T)/25 Prince Albert Sound, Western Portion/ Partie Ouest – Obstruction – Subsurface Mooring**

Reference chart: 7668

Subsurface mooring at position 70° 42.59' N 117° 51.21'W. Top float 37 metres.

(NAVAREA XVIII 112/2021)

**\*423(T)/25 Approaches to/Approches à Cambridge Bay – Obstruction – Subsurface Buoy and Apparatus**

Reference chart: 7750

Oceanographic observatory installed. Cable on the sea floor at 69° 06.83' N 105° 03.58' W extends at a depth of 8 metres to an instrument platform at 69° 06.79' N 105° 03.86' W, then to a secondary hydrophone platform at 69° 06.75' N 105° 03.88' W, at a depth of 13 metres. The cable extends at a depth of 8 metres from the primary instrument platform to a secondary instrument tripod at 69° 06.78' N 105° 03.83' W. A rope with floats and weights extends approximately 42 metres southeast of the secondary hydrophone platform to an end point at 69° 06.73' N 105° 03.86' W.

(NAVAREA XVIII 127/2021, NW-A-0202-21)

**\*515(T)/25 Croil Islands to/à Cardinal – Obstruction: Submerged Object**

Reference chart: 1434

Lost anchor reported in the vicinity of 44° 56.391'N 075° 02.670'W.

(NW-C-0892-25)

**\*516(T)/25 Lake Ontario/Lac Ontario (Western Portion/Partie Ouest) – Marine Works: Pipeline Installation**

Reference chart: 2077

Pipeline installation taking place daily until November 2025 during daylight hours south of RC Harris Water Treatment Plant. Barges and workboats on scene marked and lit at night.

(NW-C-0721-25)

**\*608(T)/25 Cobourg to/à Oshawa – Waterway Information: Shoal**

Reference chart: 2058

Increased silting reported in the area. Mariners are to call the Harbour Masters Office at 1 (905) 525-3412 to obtain up-to-date soundings of navigational channel.

(NW-C-3326-24)

**\*609(T)/25 Toronto Harbour – Marine Works: Underwater Construction**

Reference chart: 2085

Underwater construction operations taking place in the vicinity of Ashbridge Bay. Barges on site.

(NW-C-1628-25)

**\*610(T)/25 Georgian Bay / Baie Georgienne – Aids to Navigation Temporarily Established**

Reference: Notice 1024(T)/24 is cancelled.

Reference chart: 2201, 2261, 2291

Sixteen surface moorings and seventeen subsurface moorings temporarily established along the shoreline near Bruce Power at the following coordinates:

Surface Moorings	Subsurface Moorings
(1) 44° 26.074'N 081° 30.777'W	(1) 44° 25.853'N 081° 31.208'W
(7) 44° 22.902'N 081° 34.027'W	(8) 44° 22.071'N 081° 34.958'W
(9) 44° 22.834'N 081° 32.405'W	(9) 44° 22.827'N 081° 32.396'W
(12) 44° 21.697'N 081° 34.525'W	(12) 44° 21.706'N 081° 34.456'W
(29) 44° 15.766'N 081° 37.561'W	(29) 44° 15.895'N 081° 37.454'W
(30) 44° 15.833'N 081° 36.704'W	(30) 44° 15.800'N 081° 36.698'W
(39) 44° 25.621'N 081° 30.117'W	(39) 44° 25.572'N 081° 30.102'W
(41) 44° 15.259'N 081° 37.026'W	(40) 44° 21.367'N 081° 34.154'W
(43) 44° 19.782'N 081° 36.669'W	(41) 44° 15.853'N 081° 37.019'W
(45) 44° 25.219'N 081° 29.427'W	(45) 44° 25.255'N 081° 29.432'W
(B) 44° 13.928'N 081° 37.388'W	(46) 44° 20.833'N 081° 33.944'W
(E) 44° 33.390'N 081° 19.969'W	(47) 44° 20.568'N 081° 34.039'W
(Spotter 1) 44° 17.618'N 081° 37.196'W	(ol1) 44° 45.389'N 081° 18.517'W
(Spotter 2) 44° 13.977'N 081° 38.237'W	(ol2) 44° 45.389'N 081° 18.510'W
(Spotter 3) 44° 26.459'N 081° 30.404'W	(ol3) 44° 45.321'N 081° 18.556'W
(Spotter 4) 44° 23.618'N 081° 32.166'W	(lyal1) 44° 57.377'N 081° 23.298'W
	(lyal2) 44° 56.731'N 081° 23.670'W

(NW-C-1671-25)

**Preliminary Notices**

**Central Region**

Comment Submission

Comments on proposed changes in preliminary (P) notices are solicited from mariners and other interested parties within three months of the initial publication date. Following this date, the notices will be cancelled. Any objections raised must state the facts on which they are based and should include supporting information on safety, commerce and public benefit.

Comments should be directed to the following:

Superintendent  
Aids to Navigation & Waterways  
Canadian Coast Guard, Central Region  
1550 D'Estimauville Avenue  
Québec, QC G1J 5E9  
Telephone: (418) 648-7450  
Emails:  
St. Lawrence Region: [DFO.AtoNStLawrence-StLaurentAalaN.MPO@dfo-mpo.gc.ca](mailto:DFO.AtoNStLawrence-StLaurentAalaN.MPO@dfo-mpo.gc.ca)  
Great Lakes Region:  
[DFO.CCGCentralAtoNGreatLakes-GrandsLacsAalaNCentreGCC.MPO@dfo-mpo.gc.ca](mailto:DFO.CCGCentralAtoNGreatLakes-GrandsLacsAalaNCentreGCC.MPO@dfo-mpo.gc.ca)

**\*517(P)/25 Lac Saint-Louis – Range Lights to be Abandoned**

Reference chart: 1430

The Canadian Coast Guard proposes to permanently abandon the following aids to navigation:

Aid Name	LL #	Position
Lachine front range	1194	45° 25' 56.1"N 073° 41' 41.7"W
Lachine rear range	1195	45° 25' 59.3"N 073° 41' 31.1"W

The structures will remain in place.

Initial publication date: Friday, May 30, 2025

[Comment submission deadline](#): Thursday, August 28, 2025

(Q2025-044)

**Arctic Region**

Comment Submission

Comments on proposed changes in preliminary (P) notices are solicited from mariners and other interested parties within three months of the initial publication date. Following this date, the notices will be cancelled. Any objections raised must state the facts on which they are based and should include supporting information on safety, commerce and public benefit.

Comments should be directed to the following:

Superintendent,  
Aids to Navigation & Waterways  
Canadian Coast Guard, Arctic Region  
5120 49th Street  
Yellowknife NT. X1A 1P8  
Telephone: (867) 444-0109  
Email: [DFO.CCGArcticAidstoNavigation-AidesalanavigationArctiqueGCC.MPO@dfo-mpo.gc.ca](mailto:DFO.CCGArcticAidstoNavigation-AidesalanavigationArctiqueGCC.MPO@dfo-mpo.gc.ca)

**\*424(P)/25 Puvirnituk et les approches / and Approches – Racon to be Discontinued**

Reference chart: 5510

The Canadian Coast Guard proposes to permanently discontinue the following racon:

Aid Name	LL #	Position
Puvirnituk Racon	6447.24	60° 01' 15.5"N 077° 20' 21.3"W

The structure will remain.

Initial publication date: Friday, April 25, 2025

[Comment submission deadline](#): Thursday, July 24, 2025

(A2025-038)

## Pacific Coast

### Temporary Notices

No notices applicable for this edition.

### Preliminary Notices

#### Western Region

##### Comment Submission

Comments on proposed changes in preliminary (P) notices are solicited from mariners and other interested parties within three months of the initial publication date. Following this date, the notices will be cancelled. Any objections raised must state the facts on which they are based and should include supporting information on safety, commerce and public benefit.

Comments should be directed to the following:

A/Superintendent, Marc Jourdenais  
Aids to Navigation & Waterways  
Canadian Coast Guard, Western Region  
25 Huron Street  
Victoria, BC V8V 4V9  
Telephone: (250) 480-2602  
Fax: (250) 480-2702  
Email: [marc.jourdenais@dfo-mpo.gc.ca](mailto:marc.jourdenais@dfo-mpo.gc.ca)

#### **\*518(P)/25 Fraser River/Fleuve Fraser, Sand Heads to/à Douglas Island – Aid to Navigation to be Discontinued**

Reference chart: 3490

The Canadian Coast Guard proposes to permanently discontinue the following aid to navigation:

Aid Name	LL #	Position
Annieville Channel Pile Wall South	366.1	49° 10' 49.7"N 122° 55' 09.8"W

Initial publication date: Friday, May 30, 2025

[Comment submission deadline](#): Thursday, August 28, 2025

(P2025-014)

## Other (T) & (P) Notices

### Temporary Notices

#### **\*1105(T)/15 Canada – Safety of Offshore Exploration and Exploitation Vessels**

Reference: Notice 410(T)/2007 is cancelled.

2015 Annual Edition of Notices to Mariners, Notice No. 20, pages A20-1 to A20-4.

Mariners are advised that offshore exploration and exploitation vessels may be conducting drilling operations in the following areas:

Gulf of St. Lawrence

NIL

Mainland NWT

NIL

Mackenzie Delta NWT/Beaufort Sea

NIL

Arctic Islands of the NWT/Arctic Islands of Nunavut

NIL

Eastern Arctic Offshore

NIL

Davis Strait

NIL

**NOTE:** Mariners are advised to obtain up-to-date position reports on drilling vessels and production installations before entering an area of exploration and exploitation. This information is available by contacting, as appropriate, ECAREG CANADA, NORDREG CANADA or CVTS OFFSHORE via any Marine Communications and Traffic Services Centre (MCTS).

(NOTSHIP M2215/15) (NEB)

#### **\*217(T)/24 Canadian Coast Guard – Obstruction : Scientific Mooring**

Scientific mooring established at position 75° 06' 01.1"N 168° 00' 02.5"W. Top float 42 metres.

(NAVAREA XVII 30/2011)

#### **\*1027(T)/24 Canadian Coast Guard – Automatic Identification System (AIS)**

Reference: Notice \*111(T)/23 is cancelled.

Mariners are advised that the Canadian Coast Guard (CCG) has brought AIS aids to navigation (AIS AtoN) to full operational capability.

Some AIS AtoN that were deployed in a testing capacity may either be maintained or discontinued at the discretion of CCG Regions, while those deployed outside established CCG levels of service may continue to be maintained in an experimental capacity. Changes to CCG aids to navigation are communicated via Notices to Mariners.

General information on AIS and AIS AtoN is available on the [CCG e-Navigation Maritime Information Portal](#) and in the [Canadian Aids to Navigation System](#). Specific information on deployed AIS AtoN is available on the [e-Navigation](#) website.

**\*1215(T)/24 Canadian Coast Guard – Automatic Identification System Application Specific Messages (AIS ASM) Trial**

The Canadian Coast Guard (CCG) is testing Automatic Identification System Application Specific Messages (AIS ASM) nationwide. These broadcasts provide mariners on vessels with properly configured shipborne equipment with dynamic information such as water levels, weather, air gap, and a specific area or line displayed as a digitalized signal. A detailed listing of currently broadcasted Coast Guard AIS ASM is contained in the [interactive map](#) on the Canadian e-Navigation Portal. Additional information on AIS ASM may be found in IMO SN.1 Circ 289 [Guidance on the Use of AIS Application-Specific-Messages](#).

Please contact the manufacturer of your specific equipment for instructions on how to receive AIS ASM. Any questions or concerns related to the broadcast may be directed to the Coast Guard [e-Navigation Team](#) or any Canadian Coast Guard Marine Communications and Traffic Services (MCTS) Centre.

---

## **Preliminary Notices**

---

**\*519(P)/25 Scott Islands – Paper Chart to be Discontinued**

Reference chart: 3625

The Canadian Hydrographic Service proposes to permanently discontinue paper chart 3625 called Scott Islands.

Mariners and other interested parties are invited to comment on this action until August 31, 2025.

Comments should be directed to the [Canadian Hydrographic Service email address](#).

Any objections raised must state the facts on which they are based and should include supporting information on safety, commerce and public benefit.