

**LIST OF NOTICES TO MARINERS 2019**

**ATL 110 — ST. LAWRENCE RIVER —  
CAP WHITTLE/CAP GASPÉ TO LES ESCOUMINS AND ANTICOSTI ISLAND,  
THIRD EDITION, 2011**

Chapter 1 — Paragraph 41.1, last line

Add: For more information, as well as directives to follow,  
mariners should contact the wharfinger at 418-229-2233.

(Q2018-063.1)

**(Monthly Edition No. 02/19)**

Chapter 1 — Paragraph 41

Delete: 76 m

Replace by: 94 m

(Q2019-014.1)

**(Monthly Edition No. 04/19)**

Chapter 1 — Paragraph 45, last line

Add: Approximately halfway between the entrance of the bay to the  
anchorage there is a shoal near mid-channel with a depth of  
2.6 m.

(Q2019-014.2)

**(Monthly Edition No. 04/19)**

Chapter 1 — Adjacent to paragraph 45, add a caution pictograph.

(Q2019-014.3)

**(Monthly Edition No. 04/19)**

Chapter 1 — Paragraph 49

Delete: 6 m

Replace by: 7 m

(Q2019-011.1)

**(Monthly Edition No. 03/19)**

Chapter 1 — Paragraph 49

Delete: 3 m

Replace by: 2 m

(Q2019-011.2)

**(Monthly Edition No. 03/19)**

Chapter 1 — Paragraph 55

Delete: 3.4 m

Replace by: 3.3 m

(Q2019-011.3)

**(Monthly Edition No. 03/19)**

**LIST OF NOTICES TO MARINERS 2019**

**ATL 110 — ST. LAWRENCE RIVER —  
CAP WHITTLE/CAP GASPÉ TO LES ESCOUMINS AND ANTICOSTI ISLAND,  
THIRD EDITION, 2011**

Chapter 1 — Delete paragraph 56

Replace by: 56 A T-shaped commercial **wharf** is situated on the point NE of Île de Kegaska. The outer face, with depths of 5.4 m, is 44 m long. The fishers' **wharf**, 30 m long with a depth of 2.2 m, is at the inner end, on the SW side of the commercial wharf. Water and power outlets are available at the wharf. A **marine railway** and floating wharves protected by an L-shaped breakwater are located just west of the commercial wharf.

(Q2018-063.4)  
**(Monthly Edition No. 02/19)**

Chapter 1 — Paragraph 56

Delete: 44 m

Replace by: 50 m

(Q2019-011.4)  
**(Monthly Edition No. 03/19)**

Chapter 1 — Paragraph 56

Delete: 5.4 m

Replace by: 5.6 m

(Q2019-011.5)  
**(Monthly Edition No. 03/19)**

Chapter 1 — Paragraph 56

Delete: 2.2 m

Replace by: 2.9 m

(Q2019-011.6)  
**(Monthly Edition No. 03/19)**

Chapter 1 — Paragraph 56.1, last line

Add: For more information, as well as directives to follow, mariners should contact the wharfinger at 418-965-3765.

(Q2018-063.2)  
**(Monthly Edition No. 02/19)**

Chapter 1 — Paragraph 69

Delete: 4.6 m

Replace by: 4.5 m

(Q2019-012.1)  
**(Monthly Edition No. 03/19)**

Chapter 1 — Paragraph 69

Delete: 6.9 m

Replace by: 7 m

(Q2019-012.2)  
**(Monthly Edition No. 03/19)**

**LIST OF NOTICES TO MARINERS 2019**

**ATL 110 — ST. LAWRENCE RIVER —  
CAP WHITTLE/CAP GASPÉ TO LES ESCOUMINS AND ANTICOSTI ISLAND,  
THIRD EDITION, 2011**

Chapter 1 — Paragraph 74.1, last line

Add: For more information, as well as directives to follow,  
mariners should contact the wharfinger at 418-538-0063.

(Q2018-063.3)  
**(Monthly Edition No. 02/19)**

Chapter 1 — Paragraph 77

Delete: 4.2 m

Replace by: 4.3 m

(Q2019-005.1)  
**(Monthly Edition No. 03/19)**

Chapter 1 — Paragraph 77

Delete: 1.3 m

Replace by: 1.6 m

(Q2019-012.4)  
**(Monthly Edition No. 03/19)**

Chapter 1 — Paragraph 79, last line

Add: A second telecommunication tower, marked by red lights, is  
0.5 mile north of the river mouth.

(Q2018-028.1)  
**(Monthly Edition No. 02/19)**

Chapter 1 — Paragraph 100, after “west side of Baie Johan-Beetz.”

Insert: The entire federal wharf of Baie-Johan-Beetz is now closed  
to navigation and berthing is prohibited.

(Q2018-063.5)  
**(Monthly Edition No. 02/19)**

Chapter 1 — After paragraph 279

Insert: 279.1 **Caution.** — There are concrete artificial **reefs**  
(*50°12.6'N, 66°24.8'W*), with depths of 2.5 m, located in the  
NE part of the bay.

(Q2018-065.1)  
**(Monthly Edition No. 03/19)**

Chapter 1 — Adjacent to paragraph 279.1, add a caution pictograph.

(Q2018-065.2)  
**(Monthly Edition No. 03/19)**

**LIST OF NOTICES TO MARINERS 2019**

**ATL 110 — ST. LAWRENCE RIVER —  
CAP WHITTLE/CAP GASPÉ TO LES ESCOUMINS AND ANTICOSTI ISLAND,  
THIRD EDITION, 2011**

Chapter 1 — In the vicinity of paragraph 283, **Table 1.3 Port of Sept-Îles Wharves**  
Make the following changes in the “**Depth †**” column.

<b>Berth</b>	<b>Depth † metres</b>
7	8.3
14, 15	7.4 to 8.3
31	11.6

(Q2018-065.3)  
**(Monthly Edition No. 03/19)**

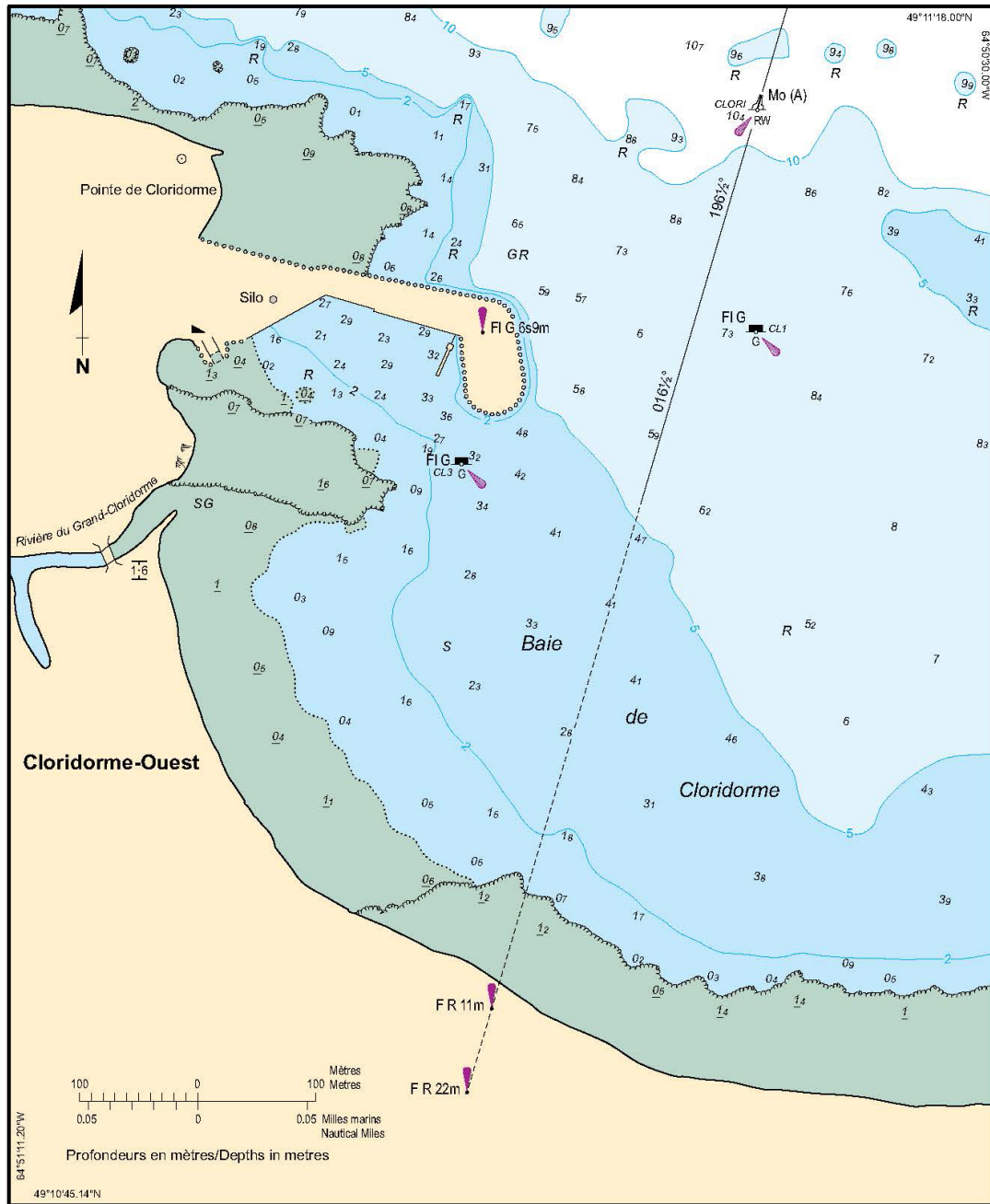
**LIST OF NOTICES TO MARINERS 2019**

**ATL 110 — ST. LAWRENCE RIVER —  
CAP WHITTLE/CAP GASPÉ TO LES ESCOUMINS AND ANTICOSTI ISLAND,  
THIRD EDITION, 2011**

Chapter 2 — In the vicinity of paragraph 54

Replace the **CLORIDORME** diagram with the new one provided in **Section 4** of this Monthly Edition.

**CLORIDORME** Échelle 1:5 000 Scale



SOURCES: Levé par le SHC en 1981, 2012, 2016, 2018 et SPAC en 1984-2007  
SOURCES: Surveyed by CHS in 1981, 2012, 2016, 2018 and by PSPC in 1984-2007

LIST OF NOTICES TO MARINERS 2019

ATL 110 — ST. LAWRENCE RIVER —  
CAP WHITTLE/CAP GASPÉ TO LES ESCOUMINS AND ANTICOSTI ISLAND,  
THIRD EDITION, 2011

(Q2018-068.1)  
(Monthly Edition No. 02/19)

Chapter 3 — Paragraph 57, after “20 to 40 m”  
Delete: “; the anchorage is exposed ... through to south.”  
Replaced by: , outside the prohibited anchorage area shown on the chart.  
The anchorage is exposed to winds from east through south.

(Q2018-046.1)  
(Monthly Edition No. 02/19)

Chapter 3 — Delete paragraph 64.1  
Replace by: 64.1 Cathodic protection systems to control corrosion are in operation at *Transport Canada's* berth No. 3, as well as at the Ro-Ro mobile ramp and the Alcoa wharf in Baie-Comeau. When berthing along these wharves certain **operational procedures** must be observed to prevent damage to vessels.

(Q2018-063.6)  
(Monthly Edition No. 02/19)

Chapter 3 — Delete paragraph 146  
Replace by: 146 The **port of Matane**, situated 1.7 miles west of Le Vieux Port, is administered by *Transport Canada*; the harbour master's office is located nearby, telephone: 418-566-7152 or 418-560-2514. The ferry facilities are managed by the *Société des Traversiers du Québec*. The harbour is open year-round but the occasional assistance of icebreakers may be required. In 2017, 245 544 tonnes of cargo were handled from the commercial wharf; the main types of cargo transiting through this wharf are wood pulp, salt, gravel and wind turbine parts.

(Q2018-063.7)  
(Monthly Edition No. 02/19)

Chapter 3 — Paragraph 147  
Delete: wharfinger  
Replace by: harbour master

(Q2018-063.8)  
(Monthly Edition No. 02/19)

Chapter 3 — Delete paragraph 148  
Replace by: 148 **Arrival information.** — Matane is a port of entry for commercial vessel **customs** but not a quarantine station; for details on *Quarantine Regulations* consult the booklet *ATL 100 — General Information*. A **Customs** office is situated at Baie-Comeau about 33 miles to the NNW; advance notice is required to obtain the services of an agent during the weekends. In accordance with the *International Health Regulations Ship Sanitation Control* Certificate Extensions can be issued by the environmental health officer.

(Q2018-063.9)  
Monthly Edition No. 02/19)

LIST OF NOTICES TO MARINERS 2019

ATL 110 — ST. LAWRENCE RIVER —  
CAP WHITTLE/CAP GASPÉ TO LES ESCOUMINS AND ANTICOSTI ISLAND,  
THIRD EDITION, 2011

Chapter 3 — Delete paragraph 154

Replace by: 154 **Berthing.** — There is a berth at the commercial  
**wharf** situated inside the west breakwater.

(Q2018-063.10)  
(Monthly Edition No. 02/19)

Chapter 3 — Paragraph 155

Delete: public

Replace by: commercial

(Q2018-063.11)  
(Monthly Edition No. 02/19)

Chapter 3 — Paragraph 158

Delete: “It is possible ... **linesmen**”

Replace by: **Stevedoring**

(Q2018-063.12)  
(Monthly Edition No. 02/19)

Chapter 3 — In the vicinity of paragraph 158

Replace **Table 3.4 Port of Matane Wharves** with the new one provided in **Section 4** of this Monthly Edition.

**Table 3.4 Port of Matane Wharves**

Berth	Length metres	Depth † metres	Remarks
<b>Commercial Wharf</b>			<b>Transport Canada</b>
1	186	9.7	Exterior storage area: 5 700 m <sup>2</sup> ; hangar Oil pipeline; water; electricity
<b>Quai des Pêcheurs</b>			<b>Fisheries and Oceans Canada</b>
	161	3	Water; electricity

† Depths are referred to chart datum.

(Q2018-063.13)  
(Monthly Edition No. 02/19)

Chapter 3 — Paragraph 172

Delete: ODAS **light buoy IML-3 (1707.1)** is moored 100 m off the  
intake pipe.

(Q2019-028.1)  
(Monthly Edition No. 05/19)

Chapter 3 — Delete paragraph 187

Replace by: 187 **Port of Rimouski (48°29'N, 68°31'W)**, administered  
by *Transport Canada*, is 3 miles upstream of Pointe au Père;  
the harbour master's office is located nearby, telephone: 418-  
722-3011 or 418-732-1818. The harbour is open year-round but  
the occasional assistance of icebreakers may be required. In  
2017, 240 158 tonnes of petroleum products and general cargo  
were handled.

(Q2018-063.14)  
(Monthly Edition No. 02/19)

LIST OF NOTICES TO MARINERS 2019

ATL 110 — ST. LAWRENCE RIVER —  
CAP WHITTLE/CAP GASPÉ TO LES ESCOUMINS AND ANTICOSTI ISLAND,  
THIRD EDITION, 2011

Chapter 3 — Delete paragraph 188

Replace by: 188 **Arrival information.** — Rimouski is a port of entry for commercial vessel **customs** but not a quarantine station; for details on *Quarantine Regulations* consult the booklet *ATL 100 — General Information*. A **Customs** office is situated at Baie-Comeau about 50 miles to the NNE; advance notice is required to obtain the services of an agent during the weekends. In accordance with the *International Health Regulations Ship Sanitation Control* Certificate Extensions can be issued by the environmental health officer.

(Q2018-063.15)  
(Monthly Edition No. 02/19)

Chapter 3 — Delete paragraph 197

Replace by: 197 **Berthing.** — There is no access to the Cross-wharf and the West wharf and berthing is prohibited. Due to risks of collapse small craft operators or any other vessels are not to approach within 20 m of these wharves. The East wharf extends in a NW direction for 425 m; from its NW end a spur (Berth No. 6) 113 m long extends in an ESE direction. The outer end of the East wharf and the outer face of the spur are encased with stone. Table 3.5 provides detailed information on these wharves.

(Q2018-063.16)  
(Monthly Edition No. 02/19)

Chapter 3 — In the vicinity of paragraph 197, **Table 3.5 Port of Rimouski Wharves**  
Make the following changes in the “**Remarks**” column.

Berth	Remarks
1	Wharf closed
8	Wharf closed
2	Wharf closed; storage area: 30 000 m <sup>2</sup>

(Q2018-063.20)  
(Monthly Edition No. 02/19)

Chapter 3 — In the vicinity of paragraph 197, **Table 3.5 Port of Rimouski Wharves**  
Make the following changes in the “**Depth †**” column.

Berth	Depth † metres
1	4.3
2	3.6
3	5.7
5	4.7

(Q2019-004.1)  
(Monthly Edition No. 04/19)



**LIST OF NOTICES TO MARINERS 2019**

**ATL 110 — ST. LAWRENCE RIVER —  
CAP WHITTLE/CAP GASPÉ TO LES ESCOUMINS AND ANTICOSTI ISLAND,  
THIRD EDITION, 2011**

Chapter 3 — Delete paragraph 198

Replace by: 198      A cathodic protection system to control corrosion is in operation alongside the East wharf (Berths N<sup>os</sup> 3, 4 and 5). When berthing along any of these berths certain **operational procedures** must be observed to prevent damage to vessels.

(Q2018-063.17)  
**(Monthly Edition No. 02/19)**

Chapter 3 — Delete paragraph 203

Replace by: 203      **Harbour facilities.** — Water and stevedoring services are available through a private contractor. The public port has a few freight hangars; the East **wharf** is fitted with connectors that are joined to an oil pipeline; disused railway tracks still exist on the West wharf.

(Q2018-063.18)  
**(Monthly Edition No. 02/19)**

Chapter 3 — Paragraph 204

Delete: *Canadian Coast Guard* regional Ship Safety  
Replace by: *Transport Canada* regional

(Q2018-063.19)  
**(Monthly Edition No. 02/19)**