



Canadian
Coast Guard

Garde côtière
canadienne

Notices to Mariners

Edition No. 04/2026
April 24, 2026



Safety First, Service Always

Monthly Eastern Edition

Canada 

Notices to Mariners – Monthly Eastern Edition
Edition No. 04/2026

Aussi disponible en français :
Avis aux navigateurs – Édition mensuelle de l'Est
Édition n° 04/2026

Published under the Authority of:

Canadian Coast Guard Programs
Aids to Navigation and Waterways
Montreal, QC H2Y 2E7

For more information, contact DFO.Notmar-Notmar.MPO@dfo-mpo.gc.ca.

© His Majesty the King in Right of Canada,
as represented by the Canadian Coast Guard, 2026.

Cat. No. Fs152-8E-PDF (Electronic PDF, English)
ISSN 2817-0075

Cat. No. Fs152-8F-PDF (Electronic PDF, French)
ISSN 2817-0083

A web version is available here:

[Notices to Mariners – Monthly Editions](#) (English)

[Avis aux navigateurs – Publications mensuelles](#) (French)

Explanatory Notes – Notices to Mariners (NOTMAR)

Geographical positions refer directly to the graduations of the largest scale Canadian Hydrographic Service chart (unless otherwise indicated).

Bearings refer to the true compass and are measured clockwise from 000° (North) clockwise to 359°; those relating to lights are from seaward.

Visibility of lights is that in clear weather.

Depths - The units used for soundings (metres, fathoms or feet) are stated in the title of each chart.

Elevations are normally given above Higher High Water, Large Tide (unless otherwise indicated).

Distances may be calculated as follows:

- 1 nautical mile = 1,852 metres (6,076.1 feet)
- 1 statute mile = 1,609.3 metres (5,280 feet)
- 1 metre = 3.28 feet

Temporary and Preliminary Notices to Mariners – Section 1A of *Notices to Mariners*

These notices are indicated by a (T) or a (P), respectively. Please note that nautical charts are not amended by the Canadian Hydrographic Service for temporary (T) and preliminary (P) notices. It is recommended that mariners chart these corrections in pencil. For the list of charts affected by (T) & (P) notices, please refer to the current [Notices to Mariners - Monthly Summary of Temporary and Preliminary Notices](#) publication.

Suggestions and Corrections Form

This form is specifically for suggestions and corrections to Notices to Mariners publications. It is available [online](#) and also in [fillable PDF format](#) included with the monthly publication ZIP file.

To submit comments and suggestions on possible improvements to the various publications and services: DFO.Notmar-Notmar.MPO@dfo-mpo.gc.ca.

To report chart discrepancies and/or corrections to the *Canadian Sailing Directions* booklets: Fill out the [Marine Information Reporting Form](#) and/or email chsinfo@dfo-mpo.gc.ca.

To report emergencies or navigational hazards: [Contact your nearest MCTS centre](#)

- VHF channel 16 (156.8 MHz)
- MF/HF frequency 2182 kHz/4125 kHz (where available)
- *16 on a cellphone (where available)

NOTMAR Website – Monthly Editions, Chart Corrections and Chart Patches

The NOTMAR website allows users to access the [monthly publications](#), [chart corrections](#), and [chart patches](#).

Users can subscribe for free to the [email notification service](#) to receive notifications when charts of interest are updated, including their patches, as well as when a new Monthly Edition of *Notices to Mariners* is published.

In addition, the monthly publication and related files to download, such as chart patches, can be obtained all together through the download of a single ZIP file.

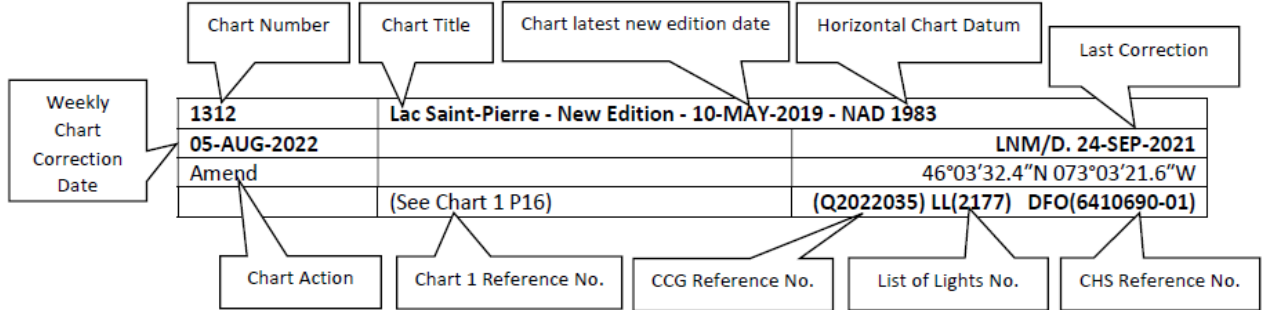
Explanatory Notes – Canadian Hydrographic Service (CHS)

Chart Corrections – Section 2 of *Notices to Mariners*

Corrections to nautical charts will be listed in numerical order by chart number. Each chart correction listed applies only to that particular chart. Related charts, if any, will have their own specific correction listed separately.

Users should also refer to CHS *Chart 1: Symbols, Abbreviations and Terms* for additional information pertaining to the correction of charts.

The illustration below describes the elements that will comprise a typical Section 2 chart correction:



The last correction number is identified with the **LN/D** or **Last Notice to Mariners Number / Date**.

Mariners are advised that only the most critical changes that directly affect safety to navigation are issued in “Section 2 – Chart Corrections.” This limitation is required to ensure that charts remain as clear and easy to read as possible. As a result, mariners may see minor discrepancies of a non-critical nature between information in official publications. For example, a small change in the nominal range or focal height of a light may not result in the production of a chart correction in Notices to Mariners, but may result in a correction in the [List of Lights, Buoys and Fog Signals](#) publication.

Note: In the case of a discrepancy between information provided on CHS charts relating to aids to navigation, and the *List of Lights, Buoys and Fog Signals* publication, the latter shall be deemed as containing the most up-to-date information.

Explanatory Notes – Marine Communications and Traffic Services (MCTS)

Navigational Warnings / Notices to Shipping

The Canadian Coast Guard (CCG) is implementing a number of changes to the aids to navigation system in Canada.

These changes are advertised as Navigational Warnings, formerly called Notices to Shipping¹, that are broadcast by the CCG, and are then followed up with Notices to Mariners, then charts are updated by hand correction, reprints or new editions.

Mariners are advised that all relevant Navigational Warnings (NAVWARN) should be kept until superseded by Notices to Mariners or through revised charts issued by the Canadian Hydrographic Service (CHS).

NAVWARN are accessible on the applicable regional page on the [CCG Navigational Warnings](#).

CHS is reviewing the impact of these changes with CCG and together are preparing an action plan on the issuing of chart revisions.

For further information, contact your regional NAVWARN Issuing Desk.

<p>Atlantic Region (North) *Port aux Basques MCTS Centre</p> <p>“N” Series NAVWARN</p> <p>Canadian Coast Guard 49 Stadium Rd. P.O. Box 99 Port aux Basques, NL A0M 1C0</p> <p>Telephone: 709-695-2168 or 1-800-563-9089 Facsimile: 709-695-7784</p> <p>Email: NAVWARN.MCTSPortAuxBasques@innav.gc.ca</p>	<p>Central Region *Prescott MCTS Centre</p> <p>“C” Series NAVWARN</p> <p>Canadian Coast Guard 401 King Street West P.O. Box 1000 Prescott, ON K0E 1T0</p> <p>Telephone: 613-925-0666 Facsimile: 613-925-4519</p> <p>Email: NAVWARN.MCTSPrescott@innav.gc.ca</p>
<p>Atlantic Region (South) *Sydney MCTS Centre</p> <p>“M” Series NAVWARN</p> <p>Canadian Coast Guard 1190 Westmount Road Sydney, NS B1R 2J6</p> <p>Telephone: 902-564-7751 or 1-800-686-8676 Facsimile: 902-564-7662</p> <p>Email: NAVWARN.MCTSSydney@innav.gc.ca</p>	<p>Arctic Region *Iqaluit MCTS Centre</p> <p><i>Operational from approximately mid-May until late December.</i></p> <p>“A” Series NAVWARN</p> <p>Canadian Coast Guard P.O. Box 189 Iqaluit, NU X0A 0H0</p> <p>Telephone: 867-979-5269 Facsimile: 867-979-4264</p> <p>Email: NAVWARN.MCTSIqaluit@innav.gc.ca</p>

*Service available in English and in French.

¹ The expression “Notice to Shipping” was changed to “Navigational Warning” in January 2019.

Table of Contents

Section 1: General and Safety Information		1
*505/23	Canadian Hydrographic Service – Magnetic Declination Calculations	1
*1207/23	Canadian Hydrographic Service – Inappropriate Geographical Names Review Process.....	1
*401/26	Protecting the North Atlantic Right Whale: Speed Restriction Measures in the Gulf of St. Lawrence	1
*402/26	Canadian Hydrographic Service – Nautical Charts.....	10
*403/26	Canadian Hydrographic Service – Electronic Navigational Charts.....	10
*404/26	Canadian Hydrographic Service – Raster Digital Charts (BSB V3).....	13
*405/26	Transport Canada - Ship Safety Bulletins #01, #02, #03 and #04/2026	13
*406/26	Saguenay–St. Lawrence Marine Park - Beluga Whale Protection: Slowdown Area at the Mouth of the Saguenay Fjord and Area Closure at Baie Sainte-Marguerite	14
*407/26	Saguenay–St. Lawrence Marine Park and Surrounding Waters – Whale Protection	16
*408/26	Canadian Coast Guard Publication - Amendments to the <i>Notices to Mariners Annual Edition 2026</i> - Section A2, Notice 5: General Guidelines for Aquatic Species at Risk and Important Marine Mammal Areas	18
*409/26	Canadian Coast Guard Publication - Amendments to the <i>Notices to Mariners Annual Edition 2026</i> - Section A2, Notice 5E: Regulatory Requirements for Scott Islands Marine National Wildlife Area	18
*410/26	Britannia Bay à/to Chats Falls – Unlit Buoy Permanently Established	18
*411/26	Canadian Coast Guard – Unlit Buoy Permanently Discontinued.....	19
Section 1A: Temporary and Preliminary Notices		20
Reminder – Comment Period for Active Preliminary Notices		20
*412(T)/26	Sorel-Tracy à/to Otterburn-Park –Marine Works : Bridge Repair.....	20
*413(T)/26	Peterborough to/à Buckhorn including/y compris Stony Lake – Bridge Horizontal Clearance Change	21
*414(T)/26	Toronto Harbour – Marine Works: Underwater Construction	21
*415/26	Whitby Harbour – Marine Works : Dredging Operations.....	21
Section 2: Chart Corrections		22
Section 3: Radio Aids to Marine Navigation Corrections		30
*416/26	Radio Aids to Marine Navigation 2026 (Atlantic, St. Lawrence, Great Lakes, Lake Winnipeg, Arctic and Pacific).....	30
Section 4: Canadian Sailing Directions Corrections		36
Section 5: List of Lights, Buoys and Fog Signals Corrections		37

Numerical Index of Canadian Charts Affected

This numerical index lists all nautical charts mentioned in this monthly edition of Notices to Mariners. Only charts appearing in Section 2 of this publication require a chart correction. The appearance of charts in all other sections, particularly those related to the correction of other nautical publications, is included here for reference.

Chart No.	Pages	Chart No.	Pages	Chart No.	Pages
1313	22	4921	27, 28		
1314	22	5351	28		
1315	22	5352	28		
1317	22	5452	28		
1350	20	6427	10		
1351	22	6428	10		
1437	23	6429	10		
1512	13	6432	10		
1550	18	7511	28		
1554	20	7565	28		
2023	21	7621	29		
2024	21	7665	29		
2026	10	8046	29		
2049	21				
2085	21				
2120	23				
2228	23				
2261	23				
4010	23				
4011	23				
4015	23				
4022	24				
4045	24				
4116	24				
4117	25, 26				
4233	20				
4367	26				
4447	26				
4486	26				
4506	26				
4615	26				
4619	26				
4622	27				
4700	27				

Section 1: General and Safety Information

***505/23 Canadian Hydrographic Service – Magnetic Declination Calculations**

(Recurrent publication of notice *505/23, originally published in the *Notices to Mariners – Monthly Eastern Edition 05/2023* publication.)

Mariners are advised that CHS has adopted the harmonized World Magnetic Model (WMM), as found on the NCEI/NOAA website. Old compass rose declination information on CHS navigational products can be updated using this website: <https://www.ngdc.noaa.gov/geomag/calculators/magcalc.shtml#declination>. While the differences in the model declinations are small each year, they can become more significant over a large period of time.

***1207/23 Canadian Hydrographic Service – Inappropriate Geographical Names Review Process**

(Recurrent publication of notice *1207/23, originally published in the *Notices to Mariners – Monthly Eastern Edition 12/2023* publication.)

The records of the Canadian Hydrographic Service could contain geographical names that may be considered inappropriate, offensive and derogatory. Geographical naming authorities are in the process of addressing many offensive place names, the review process is underway. For more information, about inappropriate geographical names, please see the [following announcement](#).

***401/26 Protecting the North Atlantic Right Whale: Speed Restriction Measures in the Gulf of St. Lawrence**

Purpose

This notice describes the speed and navigational restriction zones that vessels must follow in the Gulf of St. Lawrence.

The Government of Canada has established these zones to reduce the risk of vessels colliding with North Atlantic right whales (NARW).

Background

Due to changing migration patterns of NARW and their increased presence in the Gulf of St. Lawrence, the Government of Canada has set seasonal speed restrictions in specific zones. These speed restriction zones are defined as “static zones”, “dynamic shipping zones”, “seasonal management areas”, a “voluntary seasonal slowdown zone” and a “restricted area”. [See the map below for details](#).

Note: Vessels **must follow** Navigational Warnings outlining the speed restrictions. The *Interim Order for the Protection of North Atlantic Right Whales (Eubalaena Glacialis) in the Gulf of St. Lawrence, 2026*, enables the issuance of Navigational Warnings (NAVWARNs) imposing speed restrictions and navigation restrictions.

Speed restriction zones are described in monthly Notices to Mariners (NOTMARs), which are published by the Canadian Coast Guard. The status of these zones is broadcast through NAVWARNs, which are published by the Coast Guard’s Marine Communications and Traffic Services Centres.

Speed restriction zones and measures

The speed restriction zones will be effective from April 22, 2026, while the restricted area will be implemented based on whale presence.

Please check the [latest NAVWARN](#) for all speed restrictions currently in effect.

Speed Restriction Measures for 2026

These restrictions are in effect from **April 22 to November 15, 2026**.

Non-application

The measures described in this bulletin do not apply to:

- a) a vessel in distress or providing assistance to a person or a vessel in distress;
- b) a government vessel being used
 - (i) for law enforcement activities;
 - (ii) for search and rescue operations; or
 - (iii) to ensure the competency of the crew or the operational readiness of the vessel or crew with respect to such activities or operations.

Static zones

In the static zones, **all** vessels above **13.0 m** in length overall (LOA) must proceed at a speed of not more than 10.0 knots over the ground.

Exclusions

Air cushion vessels operated by or on behalf of the Government of Canada that are engaged in ice-clearing activities from April to June in and around Chaleur Bay are exempted when in operation.

36.57 m (20-fathoms) shallow water protocol exclusion

Vessels engaged in any commercial fishing activity may proceed at a safe operational speed in waters not more than 36.57 m (20 fathom) deep within the static zones.

If a NAVWARN states that at least one North Atlantic right whale has been detected in waters within a static zone or its buffer zone that are not more than 36.57 m deep, the speed limit of 10.0 knots over the ground will apply in the concerned zone(s) to all vessels engaged in commercial fishing activities above 13.0 m in length overall (LOA). The speed restriction will be in effect for 15 days after the day on which the whale was detected. In the event of a new North Atlantic right whale detection occurring in the last 7 days of the 15-day slowdown period, the speed restriction will be extended for an additional 15 days from the date of the new detection. This would continue until no North Atlantic right whales are detected. The buffer zones associated with the static zones are located 5 nautical miles north and south of their adjacent border in waters less than 36.57 m deep.

Coordinates for the northern static zone:

- 50° 20' N 065° 00' W
- 49° 13' N 065° 00' W
- 48° 40' N 064° 13' W
- 48° 40' N 062° 40' W
- 48° 03' N 061° 07.5' W
- 47° 58.1' N 061° 03.5' W
- 48° 00' N 061° 00' W
- 49° 04' N 061° 00' W
- 49° 04' N 062° 00' W
- 49° 43' N 063° 00' W
- 50° 20' N 063° 00' W

Coordinates for the southern static zone:

- 48° 40' N 065° 00' W
- 48° 40' N 062° 40' W
- 48° 03' N 061° 07.5' W
- 47° 58.1' N 061° 03.5' W
- 47° 10' N 062° 30' W
- 47° 10' N 065° 00' W

Dynamic shipping zones

There are five dynamic shipping zones (DSZ) located in the Traffic Separation Scheme (TSS) north and south of Anticosti Island: A, B, C, D and E.

Speed restrictions in the dynamic shipping zones

When a North Atlantic right whale is detected in a dynamic shipping zone or in the buffer zones, located 5 nautical miles south or 2.5 nautical miles from the eastern and western edges of the dynamic shipping zones:

- All vessels will be notified via a NAVWARN; and
- Vessels above **13.0 m** in length overall (LOA) must proceed at a speed of not more than 10.0 knots over the ground within that zone.

When a NAVWARN is issued implementing a speed restriction in one or more dynamic shipping zone(s), vessels above **13.0 m** in length (LOA) must not exceed a speed of 10.0 knots over the ground. Even though dynamic shipping zones overlap with static zones, vessels can travel at a safe operational speed in dynamic shipping zones when they are not under speed restriction. Mariners are encouraged to take into consideration the potential for their vessel striking North Atlantic right whales when considering a safe operational speed during navigation.

The speed restriction in the dynamic shipping zone(s) will be in effect for 15 days from the date of detection. In the event of a new North Atlantic right whale detection occurring in the last 7 days of the 15-day slowdown period, the speed restriction will be extended for an additional 15 days from the date of the new detection. This would continue until no NARW are detected. **When a speed restriction is extended due to a new North Atlantic right whale detection, it should be noted that, contrary to previous years' operations, no new NAVWARN will be issued. The initial NAVWARN will remain in place until a NAVWARN lifting the speed restriction is published.**

Coordinates for the dynamic shipping zones:

Zone A

- 49° 41' N, 065° 00' W
- 49° 20' N, 065° 00' W
- 49° 11' N, 064° 00' W
- 49° 22' N, 064° 00' W

Zone B

- 49° 22' N, 064° 00' W
- 49° 11' N, 064° 00' W
- 48° 48' N, 063° 00' W
- 49° 00' N, 063° 00' W

Zone C

- 49° 00' N, 063° 00' W
- 48° 48' N, 063° 00' W
- 48° 24' N, 062° 00' W
- 48° 35' N, 062° 00' W

Zone D

- 50° 16' N, 064° 00' W
- 50° 00' N, 064° 00' W
- 49° 56' N, 063° 00' W
- 50° 16' N, 063° 00' W;
and
- from there along the
coastline back to
50° 16' N, 064° 00' W

Zone E

- 48° 35' N 062° 00' W
- 48° 24' N 062° 00' W
- 48° 03' N 061° 07.5' W
- 47° 58.1' N 061° 03.5' W
- 48° 00' N 061° 00' W
- 48° 10.5' N 061° 00' W

Seasonal management areas

Seasonal management area 1 (SMA-1) and seasonal management area 2 (SMA-2) are speed restriction areas located north and south of dynamic shipping zone E, respectively.

Within seasonal management areas, vessels above **13.0 m** in length (LOA):

- Must restrict their speed so as not to exceed 10.0 knots over the ground from April 22 to June 30, 2026; **and**
- Are allowed to proceed at a safe operational speed from July 1 to November 15, 2026, unless a North Atlantic right whale is detected. If a whale is detected, a speed restriction of 10.0 knots over the ground will be triggered for 15 days from the date of detection. In the event of a new North Atlantic right whale detection occurring in the last 7 days of the 15-day slowdown period, the speed restriction will be extended for an additional 15 days from the date of the new detection. This would continue until no North Atlantic right whales are detected.

Coordinates for the SMA-1:

- 49° 04' N 062° 00' W
- 49° 04' N 061° 00' W
- 48° 10.5' N 061° 00' W
- 48° 35' N 062° 00' W

Coordinates for the SMA-2:

- 48° 24' N 062° 00' W
- 48° 03' N 061° 07.5' W
- 47° 58.1' N 061° 03.5' W
- 47° 26.69' N 062° 00' W

Restricted area

In the summer months, an important proportion of the total North Atlantic right whale population gathers for feeding and surface activity near the [Shediac Valley](#). Since this makes the North Atlantic right whale more susceptible to vessel collisions, a mandatory restricted area will be implemented in and near the Shediac Valley and will come into force once 80% of the restricted area is closed to fishing for the season as per the Department of Fisheries and Oceans' (DFO) right whale closure protocol, or at the latest on June 15, 2026. The restricted area will be lifted on September 25, 2026, unless North Atlantic right whale detections are reported in high number, which would extend the restricted area beyond September 25.

The size and location of the area are determined based on historical detection data of North Atlantic right whales. All necessary details can be found in the *Interim Order for the Protection of North Atlantic Right Whales (Eubalaena Glacialis) in the Gulf of St. Lawrence, 2026*. Triggering and lifting of the restricted area will be communicated to mariners through NAVWARNs and notices to fish harvesters.

Vessels above **13.0 m** in length (LOA) will be required to:

- Avoid the area unless they are part of the exceptions listed in the *Interim Order for the Protection of North Atlantic Right Whales (Eubalaena Glacialis) in the Gulf of St. Lawrence, 2026*;
- Transit the area at a speed not exceeding 8.0 knots over the ground if they are part of the exceptions.

The following exceptions will apply to the restricted area. The following listed vessels can travel through the area at not more than 8.0 knots over the ground:

- A vessel being used for commercial fishing;
- A vessel being used for fishing under the authority of a licence issued under the *Aboriginal Communal Fishing Licences Regulations*;
- A vessel being used for research purposes on behalf of the Government of Canada
- A vessel involved in research relating to right whales as part of a project that has received funding from the Government of Canada;
- A vessel being used as part of the Department of Fisheries and Oceans' Marine Mammal Response Program to assist a marine mammal or sea turtle in distress or to access or retrieve a deceased marine mammal or sea turtle;
- A vessel authorized by the Government of Canada to retrieve or identify the location of abandoned or lost fishing gear;
- A vessel involved in pollution response operations;
- A vessel avoiding immediate or unforeseen danger; or
- A vessel being used to conduct the maintenance or repair of underwater communication cables.

The following vessels can travel through the restricted area at a speed over 8.0 knots, but below 10.0 knots over the ground as required by the static speed restriction zone:

- A vessel being used by an employee of the Government of Canada or peace officer who is performing their duties.

Coordinates for the restricted area:

- 48°31.8' N 063°39.6' W
- 48°24.72' N 063°17.88' W
- 47°18.84' N 064°10.8' W
- 47°27.18' N 064°30.72' W

Report of death or injury

In the event that at least one North Atlantic right whale is reported dead or injured in the Gulf of St. Lawrence in a zone or area where there is no NAVWARN in effect, a speed restriction of 10.0 knots over the ground for vessels above 13.0 m in length overall (LOA) will be implemented in the concerned zone(s) or area(s) for 15 days from the time the NAVWARN comes into effect.

Inclement weather exception

Mariners will be notified in advance via a NAVWARN should the speed restriction status change in any zone or area, due to inclement weather.

Within any zone or area that is no longer subject to a speed restriction due to adverse weather conditions, mariners may proceed at a safe operational speed, but are encouraged to take into consideration the potential for their vessel striking North Atlantic right whales when determining that speed during navigation.

*Non-expected vessels are still prohibited from transiting through the restricted area.

Voluntary seasonal slowdown in Cabot Strait

To coincide with the North Atlantic right whales entering and exiting the Gulf of St. Lawrence in large numbers, a voluntary seasonal slowdown is being put in place in Cabot Strait from April 22 to June 30, 2026, and from September 2 to November 15, 2026.

- During these periods, vessels above 13 m in length (LOA) are requested to voluntarily reduce their speed so as to not exceed 10.0 knots over the ground.

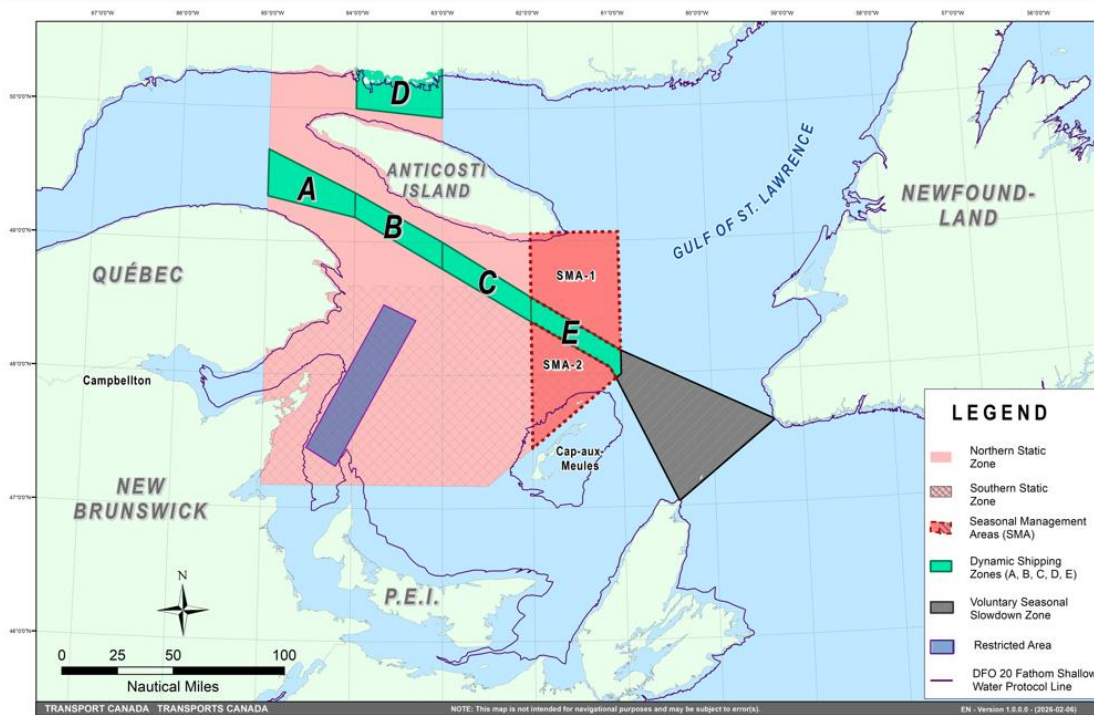
Voluntary seasonal slowdown zone coordinates:

- 48° 10.5' N 061° 00' W
- 47° 37.2' N 059° 18.5' W
- 47° 02' N 060° 23.7' W
- 47° 58.1' N 061° 03.5' W
- 48° 00' N 061° 00' W

Map of the Gulf of St. Lawrence

The map below provides a visual representation of the main zones mentioned. It must not be used for navigation or law enforcement purposes.

- Static zones (north and south), in pink;
- Dynamic shipping zones (A, B, C, D and E), in green;
- Seasonal management areas, in dark pink;
- Voluntary seasonal slowdown zone, in grey;
- Restricted area, in dark blue; and
- 36.57 m (20 fathoms) DFO shallow water protocol line.



Roseway Basin – Area to be Avoided

The Roseway Basin, located approximately 20 nautical miles south of Cape Sable Island, Nova Scotia, is a critical habitat for North Atlantic right whales, which have been observed to gather in the area on a seasonal basis in Canadian waters. This critical habitat is also located near key shipping routes. In 2007, Canada, with the support of many groups with varied interests, proposed to the International Maritime Organization (IMO) the establishment of a seasonal Area to be Avoided in the Roseway Basin to protect North Atlantic right whales, which IMO accepted and adopted.

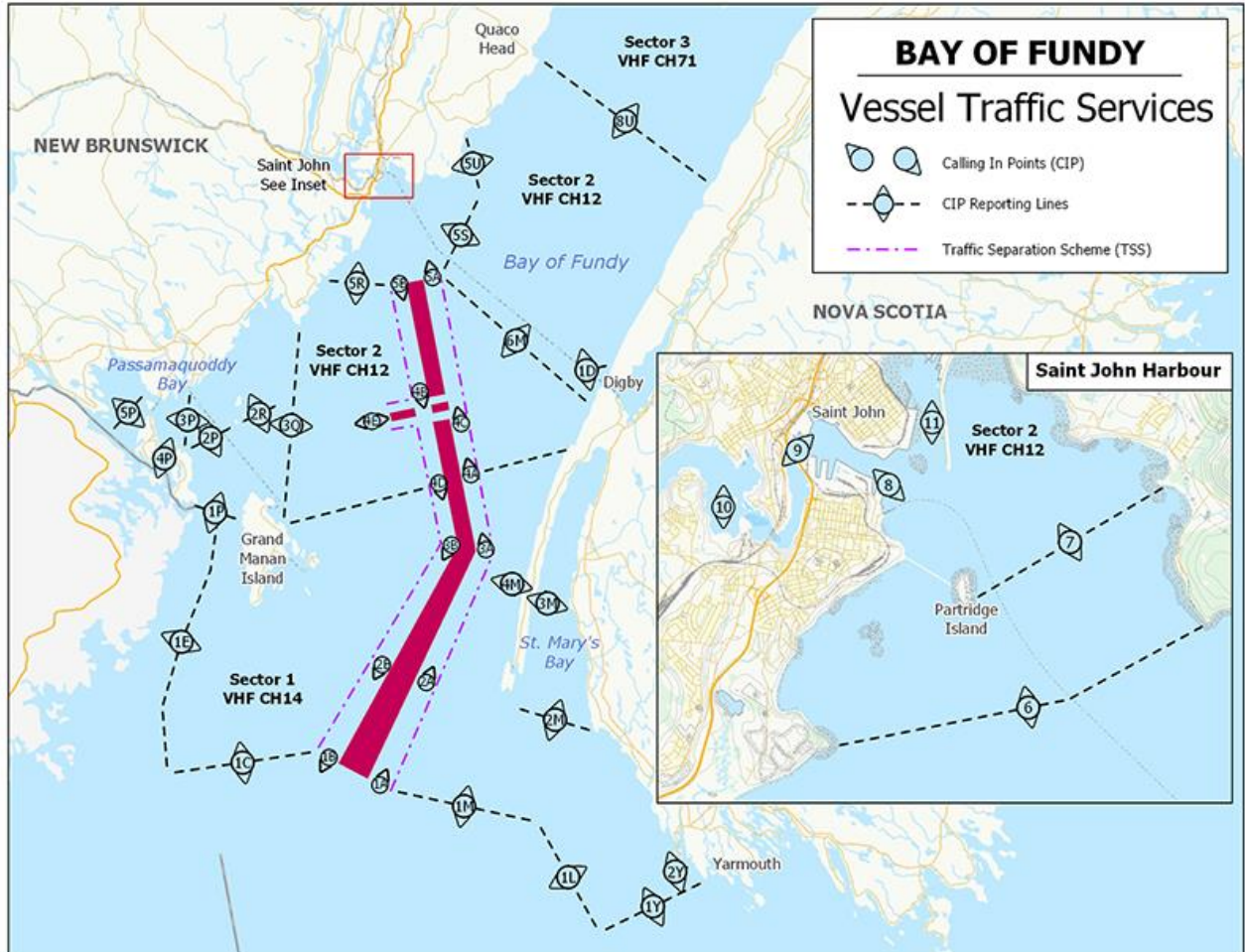
To reduce the risk of vessels colliding with North Atlantic right whales, it is recommended that vessels of 300 gross tonnages and more, in transit during the period of June 1 through December 31, avoid the Roseway Basin area. Smaller vessels are also encouraged to avoid passage through this area. If passage is necessary within the Area to be Avoided, it is recommended that all mariners decrease their vessel speed to no more than 10 knots, when safe to do so.

Roseway Basin coordinates:

- 43° 16' N 064° 55' W
- 42° 47' N 064° 59' W
- 42° 39' N 065° 31' W
- 42° 52' N 066° 05' W

Bay of Fundy – Voluntary Slowdown

The Grand Manan Basin located in the Bay of Fundy is identified as a critical habitat for the North Atlantic right whale. When North Atlantic right whales are detected in the Bay of Fundy shipping lanes and near the Grand Manan Basin area (see sectors 1 and 2 on Canadian Coast Guard's map), the Bay of Fundy Vessel Traffic Services will ask vessels to voluntarily slowdown to 10 knots via VHF channel 12 or 14 at corresponding Calling-in-Points.



This map is for visual representation only and is not to be used for navigation or enforcement.

NAVWARN broadcasts

The Canadian Coast Guard's Marine Communications and Traffic Services Centres (MCTS) issue NAVWARNs:

- By radio broadcast: for marine radio, Continuous Marine Broadcast frequencies and scheduled broadcast times, information may be found in the [Radio Aids to Marine Navigation](#) publication; and
- Online: at [Canada's Maritime Information Portal](#) and its [Navigational Warnings](#) site, using the [North Atlantic Right Whale](#) search term or category.

Mariners must ensure they have accurate and up-to-date information about the protection of the North Atlantic right whale, as in all applicable NOTMARs and NAVWARNs.

Outbound vessels will receive NAVWARNs

- at Calling-in-Point 10 (St-Laurent); or
- upon a departure downstream from the Quebec pilot station (including the Saguenay River, Chaleur Bay, Miramichi Bay, etc.).

Inbound vessels will receive NAVWARNs

- when a clearance to enter Canadian waters is granted.

Vessels in transit will receive NAVWARNs

- at the last reporting point prior to entering the mandatory speed restriction zones;
- vessels in transit will confirm they have received NAVWARNs.

MCTS Centres will broadcast NAVWARNs continuously throughout the season on Continuous Marine Broadcast.

It should be noted that, contrary to previous years' operations, reminders sent to vessels in transit 10 nautical miles before entering a speed restriction zone will no longer be transmitted.

Vessel operators are required to monitor broadcasts by the Canadian Coast Guard's Marine Communications and Traffic Services network for the most up to date information.

Aids to navigation

The Canadian Coast Guard broadcasts virtual Automatic Identification System (AIS) aids to navigation (AIS AtoN) in specific areas. These aids may notify mariners of dynamic shipping zones and/or seasonal management areas subject to speed restrictions.

Each zone is delimited by four to six virtual AIS AtoN, which can be displayed on a ship's navigation equipment, such as

- Electronic Chart Display and Information System (ECDIS);
- Electronic Chart System (ECS);
- Radar;
- Minimum Keyboard Display (MKD).

The Canadian Coast Guard broadcasts the virtual AIS AtoN only when a speed restriction is in effect in one or more zones.

Mariners must select the virtual AIS AtoN symbol to view a message such as "SectA1 Spd Lim 10 kt." This message refers to a speed restriction in effect for a specific zone.

Note: This system is not the primary method of communicating this information.

Compliance and enforcement

Vessels must comply with the Interim Orders made pursuant to the *Canada Shipping Act, 2001*, and any NAVWARNs broadcasted and published by the Canadian Coast Guard relating to the Interim Orders, aimed at regulating the navigation for the purposes of protecting the North Atlantic right whales.

If a vessel does not comply with the Interim Orders or instructions in the NAVWARNs related to the Interim Orders, the vessel could face:

- administrative monetary penalties up to a maximum of CAN \$250,000; and/or
- penal sanctions under the *Canada Shipping Act, 2001* is liable on summary conviction to a fine of not more than CAN \$1,000,000 or to imprisonment for a term of not more than 18 months, or to both.

If a vessel appears to have violated the speed restriction, Transport Canada Marine Safety inspectors will review all information provided through AIS and seek an explanation from the master.

No exemptions to the speed restriction will be granted in advance. However, if a deviation from the speed restrictions is necessary for safety reasons, the following information must be entered into the bridge logbook:

- reason(s) for deviation;
- speed at which vessel is operated;
- latitude and longitude at time of deviation;
- time and duration of deviation; and
- master of the vessel shall sign and date the bridge logbook entry.

For any deviation, Transport Canada will review and consider reasons such as:

- navigating to ensure vessel safety;
- weather conditions;
- force majeure (unforeseeable circumstances); and
- responding to emergencies.

Report a North Atlantic right whale sighting

If you see **live, free-swimming whales**:

- **Email:** DFO.GLFWwhales-BaleinesGLF.MPO@dfo-mpo.gc.ca
- When reporting sightings of North Atlantic right whales, you must include: GPS location (latitude and longitude), date and time of sighting, number of marine mammals, **photograph(s)/video(s) collected** and if possible, behavior of marine mammals observed (ex., feeding, travelling, diving).

Sightings of entangled, injured or dead North Atlantic right whale

If you see a North Atlantic right whale (and all other marine mammals) **entangled, injured or dead**, please document and report it immediately to the regional Response Network.

- When documenting you should collect: GPS location (latitude and longitude), date and time of sighting, number of marine mammals, photograph(s)/video(s), and description of the incident to provide to the Response Network.

Southern part of the Gulf of St. Lawrence (New Brunswick, Nova Scotia & Prince Edward Island)

Marine Animal Response Society
Telephone: 1-866-567-6277

Newfoundland and Labrador

Whale Release and Strandings Newfoundland and Labrador (Tangly Whales Inc.)
Telephone: 1-888-895-3003 or 1-709-895-3003

Quebec

Réseau québécois d'urgences pour les mammifères marins (RQUMM)
Telephone: 1-877-722-5346

Report a marine mammal or sea turtle incident or sighting:

For [more information](#) on reporting other marine mammal or sea turtle sighting and incidents.

Please consult [Whale Insight](#) for the latest right whale observations.

***402/26 Canadian Hydrographic Service – Nautical Charts**

Charts	Main Title	Version Date	Release Date
New Editions			
6427	Point Separation to/au Aklavik Channel Kilometre 1480 / Kilomètre 1540	2026-03-27	2026-04-03
6428	Aklavik Channel to/au Napoiak Channel including/y compris Aklavik Channel to/à Aklavik Kilometre 1530 / Kilometre 1597	2026-03-27	2026-04-03
6429	Kilometre/Kilomètre 1580 - 1645 including/y compris East Channel, Inuvik to/à Kilometre/Kilomètre 1645	2026-03-27	2026-04-03
6432	Kilometre/Kilomètre 1500 to/à Inuvik East Channel	2026-03-27	2026-04-03

***403/26 Canadian Hydrographic Service – Electronic Navigational Charts**

S-57 & S-101 ENC Number	Chart Title	Published
New Products		
CA471209 (Edn 1.000)	CA471209	2026-03-27
CA471214 (Edn 1.000)	CA471214	2026-03-27
CA471222 (Edn 1.000)	Transit480N1230W	2026-03-27
CA53WLXA (Edn 1.000)	Port4490N07490W	2026-03-27
CA53WLYA (Edn 1.000)	Port4490N07480W	2026-03-27
CA53WM0A (Edn 1.000)	Port4490N07470W	2026-03-27
CA53XLXA (Edn 1.000)	Port4500N07490W	2026-03-27
CA53XLYA (Edn 1.000)	Port4500N07480W	2026-03-27
CA53XM0A (Edn 1.000)	Port4500N07470W	2026-03-27
CA53XM1A (Edn 1.000)	Port4500N07460W	2026-03-27
CA53XM2A (Edn 1.000)	Port4500N07450W	2026-03-27
CA53YM1A (Edn 1.000)	Port4510N07460W	2026-03-27
CA53YM2A (Edn 1.000)	Port4510N07450W	2026-03-27
CA53YM3A (Edn 1.000)	Port4510N07440W	2026-03-27
CA53YM4A (Edn 1.000)	Port4510N07430W	2026-03-27
CA53YM5A (Edn 1.000)	Port4510N07420W	2026-03-27
CA540M3A (Edn 1.000)	Port4520N07440W	2026-03-27
CA540M4A (Edn 1.000)	Port4520N07430W	2026-03-27
CA540M5A (Edn 1.000)	Port4520N07420W	2026-03-27
CA540M6A (Edn 1.000)	Port4520N07410W	2026-03-27
CA540M7A (Edn 1.000)	Port4520N07400W	2026-03-27
CA541M5A (Edn 1.000)	Port4530N07420W	2026-03-27
CA541M7A (Edn 1.000)	Port4530N07400W	2026-03-27
CA54BQHA (Edn 1.000)	CA54BQHA	2026-03-27
CA54BQJA (Edn 1.000)	CA54BQJA	2026-03-27
CA54CQHA (Edn 1.000)	CA54CQHA	2026-03-27
CA54CQJA (Edn 1.000)	CA54CQJA	2026-03-27

S-57 & S-101 ENC Number	Chart Title	Published
CA571255 (Edn 1.000)	CA571255	2026-04-11
CA571256 (Edn 1.000)	CA571256	2026-03-27
New Editions		
101CA00T450N0740W (Edn 5.000)	101CA00T450N0740W	2026-04-17
CA271031 (Edn 4.000)	West Coast Haida Gwaii	2026-04-17
CA271032 (Edn 6.000)	Hecate Strait	2026-04-17
CA271033 (Edn 3.000)	Offshore Haida Gwaii	2026-04-17
CA271034 (Edn 3.000)	Offshore Vancouver Island	2026-04-17
CA271060 (Edn 5.000)	CA271060	2026-04-17
CA271100 (Edn 3.000)	Vancouver Island	2026-04-17
CA271108 (Edn 3.000)	CA271108	2026-04-17
CA43BPMB (Edn 3.000)	CA43BPMB	2026-04-10
CA43BPXA (Edn 3.000)	CA43BPXA	2026-04-10
CA43MP1A (Edn 3.000)	CA43MP1A	2026-04-10
CA43MPBA (Edn 2.000)	CA43MPBA	2026-04-10
CA43MPBB (Edn 2.000)	CA43MPBB	2026-04-10
CA43MPMA (Edn 3.000)	CA43MPMA	2026-04-10
CA43MQJB (Edn 2.000)	CA43MQJB	2026-04-10
CA43MRFA (Edn 3.000)	CA43MRFA	2026-04-10
CA43XM7A (Edn 5.000)	Transit4500N07400W	2026-04-17
CA43XP1A (Edn 2.000)	CA43XP1A	2026-04-10
CA43XPBA (Edn 3.000)	CA43XPBA	2026-04-10
CA43XPMA (Edn 3.000)	CA43XPMA	2026-04-10
CA43XQ8A (Edn 3.000)	CA43XQ8A	2026-04-10
CA43XQJA (Edn 3.000)	CA43XQJA	2026-04-10
CA448P1A (Edn 2.000)	CA448P1A	2026-04-10
CA448PXA (Edn 4.000)	CA448PXA	2026-04-10
CA448QJA (Edn 2.000)	CA448QJA	2026-04-10
CA448TKA (Edn 2.000)	CA448TKA	2026-04-10
CA44JPMA (Edn 3.000)	CA44JPMA	2026-04-10
CA44JPXA (Edn 2.000)	CA44JPXA	2026-04-10
CA44JRFA (Edn 3.000)	CA44JRFA	2026-04-10
CA44JSNC (Edn 3.000)	CA44JSNC	2026-04-10
CA44JSYA (Edn 4.000)	CA44JSYA	2026-04-17
CA44JSYB (Edn 2.000)	CA44JSYB	2026-04-17
CA44JSYC (Edn 2.000)	CA44JSYC	2026-04-17
CA44JSYD (Edn 2.000)	CA44JSYD	2026-04-17
CA44JT9A (Edn 3.000)	CA44JT9A	2026-04-17
CA44JT9B (Edn 2.000)	CA44JT9B	2026-04-17

S-57 & S-101 ENC Number	Chart Title	Published
CA455SCA (Edn 3.000)	CA455SCA	2026-04-03
CA455SNA (Edn 4.000)	CA455SNA	2026-04-03
CA45FS2A (Edn 2.000)	CA45FS2A	2026-04-17
CA471213 (Edn 3.000)	CA471213	2026-03-27
CA471216 (Edn 2.000)	CA471216	2026-03-27
CA471218 (Edn 2.000)	CA471218	2026-03-27
CA471219 (Edn 3.000)	CA471219	2026-03-27
CA471220 (Edn 2.000)	CA471220	2026-03-27
CA471221 (Edn 3.000)	CA471221	2026-03-27
CA471223 (Edn 2.000)	CA471223	2026-03-27
CA53KPKA (Edn 2.000)	CA53KPKA	2026-04-10
CA53MQ0A (Edn 2.000)	Liverpool Harbour	2026-04-10
CA53MQ1A (Edn 2.000)	Liverpool Harbour	2026-04-10
CA53TQBA (Edn 2.000)	CA53TQBA	2026-04-10
CA53TQCA (Edn 3.000)	CA53TQCA	2026-04-10
CA53UQBA (Edn 2.000)	CA53UQBA	2026-04-10
CA53VPCA (Edn 2.000)	CA53VPCA	2026-04-10
CA53XPAA (Edn 2.000)	CA53XPAA	2026-04-10
CA53YP9A (Edn 2.000)	CA53YP9A	2026-04-10
CA541R5A (Edn 2.000)	CA541R5A	2026-04-10
CA543R1A (Edn 3.000)	CA543R1A	2026-04-10
CA544R0A (Edn 2.000)	CA544R0A	2026-04-10
CA544R1A (Edn 2.000)	CA544R1A	2026-04-10
CA54CQCA (Edn 2.000)	CA54CQCA	2026-04-17
CA54CQDA (Edn 2.000)	CA54CQDA	2026-04-17
CA54CQFA (Edn 2.000)	CA54CQFA	2026-04-17
CA54DQCA (Edn 2.000)	CA54DQCA	2026-04-17
CA54DQDA (Edn 2.000)	CA54DQDA	2026-04-17
CA54MT7A (Edn 2.000)	Port4730N05420W	2026-04-17
CA54NT7A (Edn 2.000)	Port4740N05420W	2026-04-17
CA54PT8A (Edn 3.000)	Port4750N05410W	2026-04-17
CA54PTKA (Edn 2.000)	CA54PTKA	2026-04-17
CA54QPQA (Edn 2.000)	CA54QPQA	2026-04-17
CA54VPXA (Edn 2.000)	Port4810N06500W	2026-04-10
CA571525 (Edn 2.000)	CA571525	2026-03-27
CA571526 (Edn 2.000)	CA571526	2026-03-27

Charts Permanently Withdrawn		
CA370766	Saanich to Point Roberts	2026-03-27
CA373472	Cape Mills to/à Cape Rammelsberg	2026-04-24
CA471217	CA471217	2026-04-24
CA473233	Lake St. Francis	2026-04-03
CA473300	Lac St-Louis au/to Lac St-Francois	2026-04-03
CA573360	Glencore Xstrata Wharf (formerly Falconbridge Wharf)	2026-04-24
CA573386	Baie Saint-François	2026-04-03
CA573387	Port de Valleyfield	2026-04-03
CA573408	Cornwall	2026-04-03
CA573452	Ice Hunter Rock to/a Chesterfield Narrows	2026-04-24
CA573453	Regina Narrows and/et Polaris Narrows	2026-04-24
CA573455	Baker Lake Harbour	2026-04-24

***404/26 Canadian Hydrographic Service – Raster Digital Charts (BSB V3)**

Charts	Main Title	Scale	Published
Permanently Withdrawn			
RM-1512	Ottawa to/à Smiths Falls		
RM-3461	Juan de Fuca Strait, Eastern Portion/Partie Est		
RM-3462	Juan de Fuca Strait to/à Strait of Georgia		
RM-3602	Approaches to/Approches à Juan de Fuca Strait		
RM-3606	Juan de Fuca Strait		
RM-4585	Green Head to / à Little Bay Island		

***405/26 Transport Canada - Ship Safety Bulletins #01, #02, #03 and #04/2026**

An updated and new **Ship Safety Bulletins** have recently been posted on the [Transport Canada website](#).

To view or download these bulletins, please click on the links below:

[SSB#01/2026](#) – Mandatory fatigue management training (**Revised**)

[SSB#02/2026](#) – Protecting the North Atlantic right whale: speed restriction measures in the Gulf of St. Lawrence

[SSB#03/2026](#) – Requirements for passenger submersibles operating in Canadian waters

[SSB#04/2026](#) – New vessel stability e-course for Canadian seafarers

Sign up for [e-Bulletin](#) to receive an e-mail notice each time a new Ship Safety Bulletin is published on our website.

Contact us at marinesafety-securitemaritime@tc.gc.ca or 1-855-859-3123 (Toll Free).

***406/26 Saguenay–St. Lawrence Marine Park - Beluga Whale Protection: Slowdown Area at the Mouth of the Saguenay Fjord and Area Closure at Baie Sainte-Marguerite**

The Saguenay–St. Lawrence Marine Park and its surrounding area are at the heart of endangered beluga whale critical summer habitat. Marine mammal protection measures have been put in place in accordance with the *Marine Activities in the Saguenay–St. Lawrence Marine Park Regulations* within the limits of the Marine Park.

However, important feeding, calving and rearing areas for beluga whales require greater protection to ensure the recovery of the species. The portion of the Saguenay situated between the mouth of the Fjord and Baie Sainte-Marguerite is one of the areas most used by females and their young from May to October. The mouth of the Saguenay is known as a feeding ground and Baie Sainte-Marguerite as a calving and rearing area.

In order to prevent collisions with beluga whales, a compulsory 15-knot slowdown area is in effect from May 1st to October 31st at the mouth of the Saguenay. To ensure tranquility for female belugas and their young during the critical calving period, access to Baie Sainte-Marguerite is prohibited to all vessels from June 21st to September 21st, except for special authorizations (see description below).

For safety reasons, *the slowdown area measure at the mouth of the Saguenay Fjord does not apply* to cargo ships (see the monthly edition of *Notice to Mariners* from May to October for voluntary protection measures in the St. Lawrence Estuary). An enhanced vigilance is, however, recommended to all navigators between the mouth of the Saguenay Fjord and Baie Sainte-Marguerite for the protection of beluga whales.

For more information on the Saguenay–St. Lawrence Marine Park, see notice 5C of the *Notices to Mariners Annual Edition 2026* or visit the [Saguenay–St. Lawrence Marine Park website](#).

REGULATORY PROTECTION MEASURES — BELUGA WHALE

Entire Marine Park Territory:

- When beluga whales are less than half a nautical mile (926 metres) from a motorized vessel, the vessel must maintain a steady speed of between 5 and 10 knots.
- All vessels, including human-powered vessels (kayaks and canoes), must continue to move forward and maintain their heading.
- All vessels must maintain a minimum distance of 400 metres from beluga whales at all times.

For more information concerning the regulations, consult the ["Navigate" section of the Saguenay–St. Lawrence Marine Park website](#).

Mouth of the Saguenay Fjord (Figure 1) — Slowdown Area (area crosshatched in red):

- Maximum speed at the mouth of the Saguenay between buoys S7 and S8 and the ferry docks between Baie-Sainte-Catherine and Tadoussac is 15 knots from May 1st to October 31st.

Baie Sainte-Marguerite (Figure 2) — Area Closure (red area):

- From June 21st to September 21st, vessels must not enter the red area, which follows a line between Cap Nord-Ouest and Cap Sainte-Marguerite.
- Special authorizations are granted only for kayaks, canoes and recreational fishermen who must travel without stopping along a corridor within 10 metres of the shore or in shallow areas.

VOLUNTARY PROTECTION MEASURES

Baie Sainte-Marguerite sector (Figure 2) — Transit Area (area crosshatched in yellow):

- From June 21st to September 21st, navigation in this area is recommended at a speed of between 5 and 10 knots without stopping.

The purpose of this transit area is to favour respect of the *Marine Activities in the Saguenay–St. Lawrence Marine Park Regulations*, since beluga whales are often present in the Baie Sainte-Marguerite sector.

INFORMATION

All incidents, including collisions with whales, must be reported without delay by calling 1-866-508-9888. For any other situation concerning a marine mammal that is either dead or in trouble, contact the Marine Mammal Emergency Response Network at 1-877-722-5346, or use VHF channel 16.

Figure 1

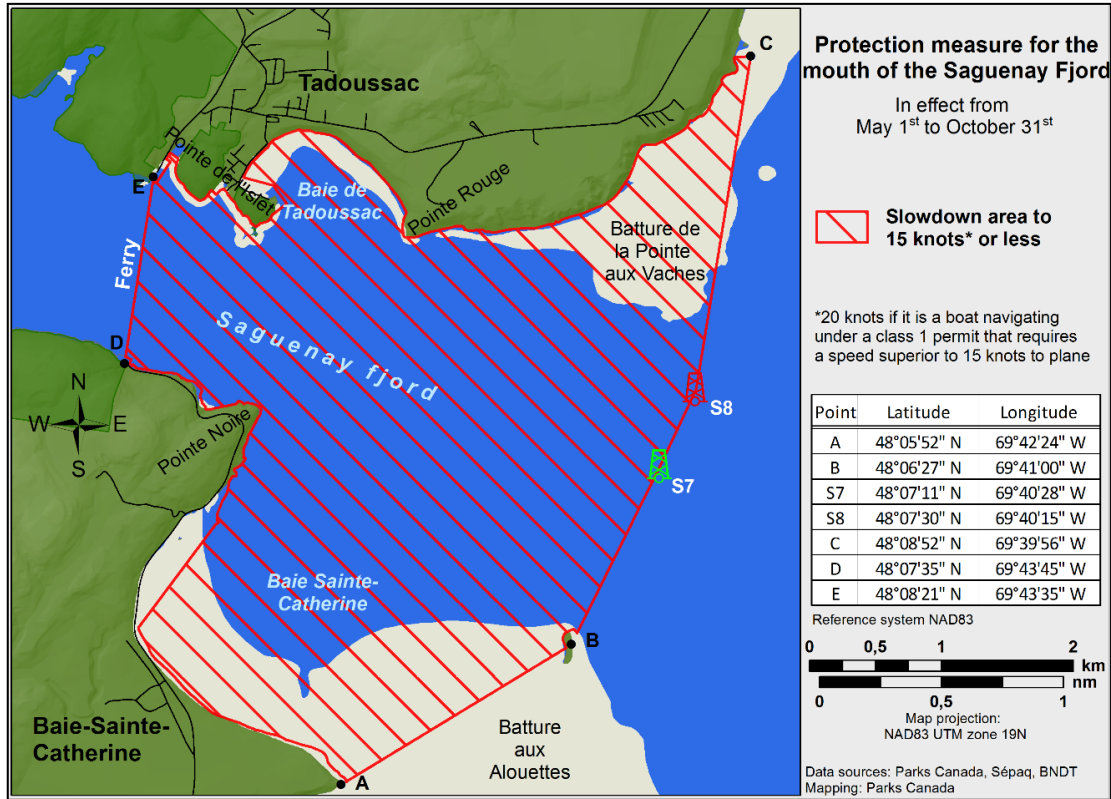
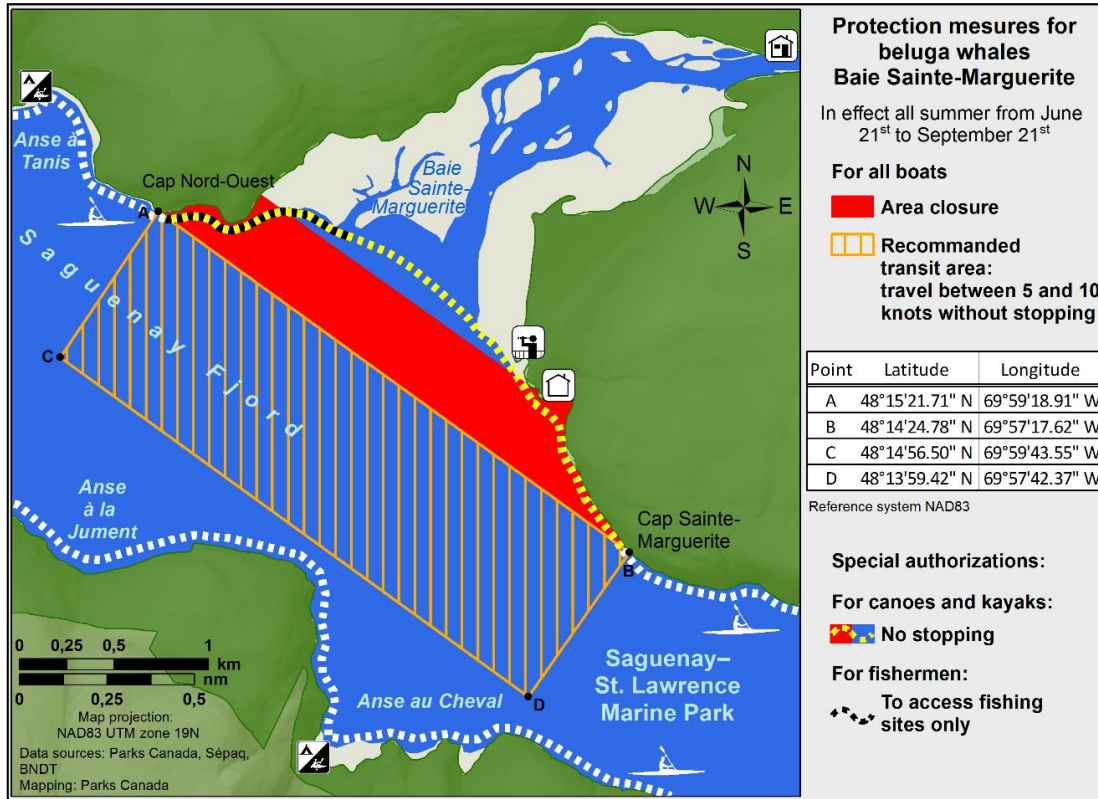


Figure 2



***407/26 Saguenay–St. Lawrence Marine Park and Surrounding Waters – Whale Protection**

The waters in and around the Saguenay–St. Lawrence Marine Park are well known for the resident endangered beluga population and the wide diversity of whales that migrate there to feed, particularly between April and November.

Regulatory protection measures

All whale species that are found in the St. Lawrence are protected under the *Marine Mammal Regulations*, pursuant to the *Fisheries Act*. Within the boundaries of the Marine Park, specific measures are set out in the *Marine Activities in the Saguenay–St. Lawrence Marine Park Regulations*, pursuant to the establishment of the *Saguenay–St. Lawrence Marine Park Act*. Any collision with a marine mammal within the Marine Park must immediately be reported to a park warden at 1-866-508-9888. For collisions that occur outside the Marine Park or for any situation involving a marine mammal that is dead or in trouble, contact the emergency network at 1-877-722-5346 or on VHF channel 16.

For more information on the Saguenay–St. Lawrence Marine Park, see notice 5C of the *Notices to Mariners Annual Edition 2026*.

Voluntary protection measures

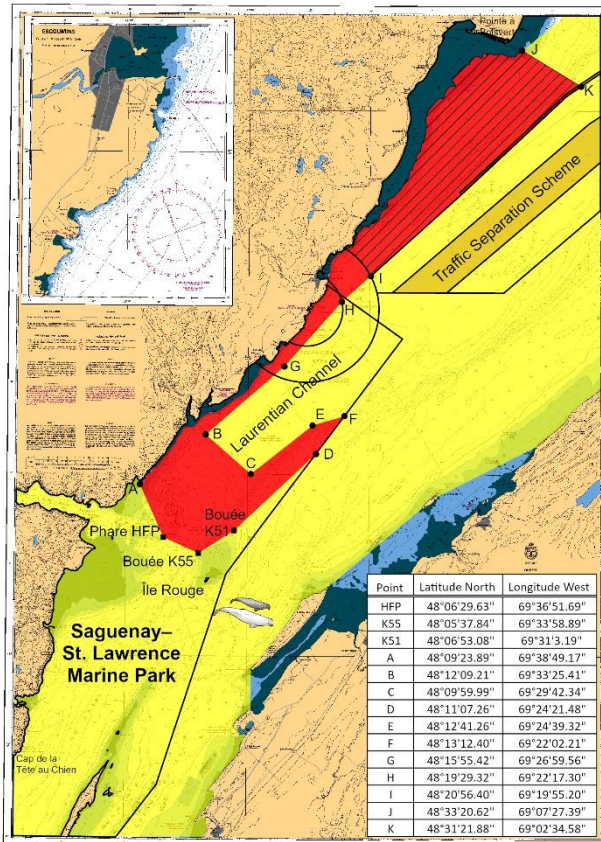
Provisional measures in effect from May 1 to October 31, 2026. See map at the end of this notice.

These measures apply to merchant vessels and cruise ships between Pointe à Boisvert and Cap de la Tête au Chien to prevent collisions with whales. These measures should only be taken when they will not jeopardize navigational safety.

Caution area (yellow area): To reduce the risk of collisions with whales that can be present anywhere in this area, heightened vigilance of navigators is critical. Posting a lookout is recommended in order to increase the chances of seeing the whales and thus taking necessary measures to avoid them. If bypassing the whales is not possible, slow down and wait for the animals to move away to a distance greater than 400 metres (0.215 nautical miles) before resuming original speed. It is more difficult to see the animals at night therefore increased caution is recommended.

Slow down to 10 knots or less area (red area): To reduce the risk of collisions with whales in this feeding area, it is recommended that vessels slow down to a maximum speed through the water of 10 knots and post a lookout. It is further recommended to remain in the Laurentian Channel to the north of Île Rouge to minimize the impact of noise in a sensitive area south of this island, which is highly frequented by herds of beluga whales composed of females and young.

Area to be avoided (hatched red area): To reduce noise and the risk of collisions with whales, vessels should avoid transiting through this area which is highly frequented by blue whales, an endangered species. If the area cannot be avoided, slow down to a speed through the water of 10 knots or less.

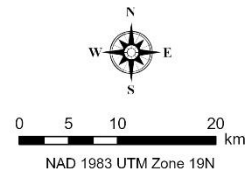


Voluntary protection measures to reduce the risk of ship strikes with whales and to minimize the impact of noise on beluga whale

Provisional measures in effect from May 1st to October 31st 2026

- Caution area**
presence of whales
- Slow down to 10 knots* or less area**
Important whale feeding area
- Area to be avoided; if impossible, slow down to 10 knots* or less**
Important blue whale area
- Sensitive area highly used by beluga herds composed of females and young
It is recommended to navigate in the Laurentian Channel north of Île Rouge

* 10 knots refers to speed through water



***408/26 Canadian Coast Guard Publication - Amendments to the *Notices to Mariners Annual Edition 2026* - Section A2, Notice 5: General Guidelines for Aquatic Species at Risk and Important Marine Mammal Areas**

Page 6

AMEND AS FOLLOWS:

Roseway Basin Critical Habitat and International Maritime Organization-Adopted Area to Be Avoided

Guidelines (June - December):

- To significantly reduce the risk of vessel strikes on North Atlantic Right Whales, it is recommended that ships of 300 gross tonnages and greater, solely in transit during the period of June 1st through December 31st, avoid the area. This routing measure has been adopted by the International Maritime Organization (IMO) as a seasonal Area to be Avoided described in IMO. SN.1/Circ.263. October 2007.
- Smaller vessels are also asked to avoid passage through the area.
- If passage through this area is required, decrease vessel speed to 10.0 knots or less and post a look-out to increase the likelihood of sighting and avoiding marine mammals. Increased caution must be exercised in conditions of reduced visibility, such as rain, fog, rough sea state, or at night. Be aware that marine mammals often travel in small groups dispersed over an area of several miles. Maneuver around marine mammals with caution (see general guidelines). Do not assume the marine mammals will move out of the way.

Learn more about the recovery process for the North Atlantic Right Whale at the [Species at Risk Public Registry](#)

***409/26 Canadian Coast Guard Publication - Amendments to the *Notices to Mariners Annual Edition 2026* - Section A2, Notice 5E: Regulatory Requirements for Scott Islands Marine National Wildlife Area**

Page 3

AMEND AS FOLLOWS:

Map showing the Flight Restriction Zone and boundaries for Scott Islands marine National Wildlife Area. An inset lists the latitude and longitude coordinates of the Flight Restriction Zone within the marine National Wildlife Area. The scale on the map is in kilometers and is provided in this document for illustrative purposes only and may not reflect the reality on site.

The flight restriction zone applies to all aircraft, including drones (Unmanned Aerial Vehicles). Aeronautical charts are available from [NavCanada](#) for a fee. Drone pilots can use the interactive [Drone Site Selection Tool](#) to determine where drone flight is prohibited, restricted or potentially hazardous.

*All geographic coordinates (latitude and longitude) are expressed in the North American Datum 1983 (NAD83) Canadian Spatial Reference System (CSRS).

***410/26 Britannia Bay à/to Chats Falls – Unlit Buoy Permanently Established**

Reference chart: 1550

The following unlit buoy has been permanently established at the following coordinates:

Aid Name	LL No.	Position
Buoy K3/1	7595.1	45° 22' 58.3"N 075° 52' 17.9"W

(B2026-006)

***411/26 Canadian Coast Guard – Unlit Buoy Permanently Discontinued**

Reference chart: N/A

The following unlit buoy has been permanently discontinued:

Aid Name	LL No.	Position
Buoy AM2	7006	42° 51' 23.0"N 082° 27' 54.0"W

(B2026-007)

Section 1A: Temporary and Preliminary Notices

Reminder – Comment Period for Active Preliminary Notices

This is a reminder that the comment period is still open for the following active Preliminary notices:

Notice #	Reference Chart #	Aids Affected (LL No.)	Intent of Notice
Atlantic Coast			
214(P)/26	4233	662.5	Fixed Aid to Navigation to be Discontinued
Inland Waters			
216(P)/26	1554	LIST	Notice of Proposed Changes

Please refer to the [Notices to Mariners - Monthly Summary of Temporary and Preliminary Notices](#) publication for details.

Newfoundland and Labrador Coast

Temporary Notices

No notices applicable for this edition.

Preliminary Notices

No notices applicable for this edition.

Atlantic Coast

Temporary Notices

*412(T)/26 Sorel-Tracy à/to Otterburn-Park – Marine Works : Bridge Repair

Reference: Notice 808(T)/25 is cancelled.

Reference chart: 1350

Repair work taking place daily, 24 hours a day at the Turcotte Bridge. Barge and tug are on scene. Navigation channel reduced to 25 metres and is marked and lit. Air draft reduced to 12 metres. Any vessels requiring the barge be moved to make passage under the bridge are required to give a 72 hours notice by e-mailing m.poirier@pomerleau.ca or alexis.noel@pomerleau.ca, and provide them with:

- Date and time of requested passage;
- vessel name and type;
- estimated speed of passage;
- length, beam, and draft of the vessel;
- their contact information.

All vessels transiting the area are requested to remain 3 metres away from the barge.

Minimum wake requested.

(NW-C-0806-26)

Preliminary Notices

No notices applicable for this edition.

Inland Waters

Temporary Notices

***413(T)/26 Peterborough to/à Buckhorn including/y compris Stony Lake – Bridge
Horizontal Clearance Change**

Reference chart: 2023, 2024

The horizontal clearance of the Faryon Bridge at 44° 21.495'N 078° 17.394'W is reduced to 10.67 metres from November 1st to April 30th and 21.34 metres from May 1st to October 31st for bridge work.

Scaffolding are present on both sides of the bridge marked with flashing markers and yellow buoys.

Lit barges 9 metres by 9 metres are on site.

(NW-C-0687-26)

***414(T)/26 Toronto Harbour – Marine Works: Underwater Construction**

Reference: Notice 609(T)/25 is cancelled.

Reference chart: 2085

Underwater construction operations taking place in the vicinity of Ashbridge Bay from April 13th to December 1st. Barges on site.

***415/26 Whitby Harbour – Marine Works : Dredging Operations**

Reference: Notice 814(T)/25 is cancelled (Chart 2049).

The dredging operations taking place in Whitby Harbour are suspended until July 15th, 2026.

Preliminary Notices

No notices applicable for this edition.

Arctic Coast

Temporary Notices

No notices applicable for this edition.

Preliminary Notices

No notices applicable for this edition.

Section 2: Chart Corrections

1313 - Batiscan au/to Lac Saint-Pierre - New Edition - 08-MAR-2019 - NAD 1983

03-APR-2026

LNМ/D. 13-JUN-2025

Delete depth of 10,5 metres
(See Chart 1, I10)

46°18'50.0"N 072°33'07.1"W

DFO(6411368-02)

Add depth of 10,2 metres
(See Chart 1, I10)

46°18'50.0"N 072°33'07.1"W

DFO(6411368-03)

1314 - Donnacona à/to Batiscan - New Edition - 06-JUN-2025 - NAD 1983

03-APR-2026

LNМ/D. 12-DEC-2025

Add depth of 9,6 metres
(See Chart 1, I10)

46°40'02.7"N 071°48'29.7"W

DFO(6411367-02)

Delete depth of 12,6 metres
(See Chart 1, I10)

46°40'30.2"N 071°50'29.2"W

DFO(6411367-03)

Add depth of 11,7 metres
(See Chart 1, I10)

46°40'30.2"N 071°50'30.0"W

DFO(6411367-04)

1315 - Québec à/to Donnacona - New Edition - 24-MAY-2019 - NAD 1983

03-APR-2026

LNМ/D. 22-AUG-2025

Add depth of 11,2 metres
(See Chart 1, I10)

46°40'50.2"N 071°33'50.9"W

DFO(6411367-01)

1317 - Sault-au-Cochon à/to Québec - New Edition - 03-APR-2020 - NAD 1983

03-APR-2026

LNМ/D. 06-FEB-2026

Add depth of 9,4 metres
(See Chart 1, I10)

47°02'18.1"N 070°45'47.2"W

DFO(6411370-01)

Add depth of 15 metres
(See Chart 1, I10)

47°09'31.8"N 070°39'32.9"W

DFO(6411370-02)

1351 - Pointe Naylor au Lac/to Lake Champlain - Sheet/Feuille 4 - New Edition - 18-NOV-2016 - NAD 1983

10-APR-2026

LNМ/D. 28-JUL-2023

Affix patch

45°01'36.0"N 073°20'52.6"W

Download Patch - https://www.notmar.gc.ca/chsftp/patches/1351_6411343_1_202603101234.pdf

DFO(6411343-01)

1351 - Quai des Douanes/Customs Wharf - Sheet/Feuille 4 - New Edition - 18-NOV-2016 - NAD 1983

10-APR-2026

LNМ/D. 28-JUL-2023

Affix patch

45°01'27.2"N 073°21'06.5"W

Download Patch - https://www.notmar.gc.ca/chsftp/patches/1351_6411343_2_202603101235.pdf

DFO(6411343-02)

1437 - Summerland Group to/à Grindstone Island - New Edition - 27-JUL-2018 - World Geodetic System 1984

03-APR-2026

LNMD. 13-OCT-2023

Reposition red starboard hand lighted pillar buoy, marked 202
(See Chart 1, Qb) from 44°19'22.0"N 075°56'38.0"W
to 44°19'22.7"N 075°56'37.8"W
(NOS:Weekly Crit_4225) DFO(6605677-01)

Reposition red starboard hand lighted pillar buoy, marked 208
(See Chart 1, Qb) from 44°17'55.6"N 075°59'22.4"W
to 44°17'56.6"N 075°59'21.9"W
(NOS:Weekly Crit_4225) DFO(6605677-02)

Reposition red starboard hand conical lighted buoy, marked 216A
(See Chart 1, Qb) from 44°16'35.1"N 076°01'48.8"W
to 44°16'34.2"N 076°01'50.6"W
(NOS:Weekly Crit_4225) DFO(6605677-03)

2120 - Port Dover - New Edition - 14-FEB-2025 - NAD 1983

17-APR-2026

Add obstruction, depth unknown
(See Chart 1, K40) 42°47'01.7"N 080°11'59.6"W
DFO(6605680-01)

2228 - Lake Huron/Lac Huron (Southern Portion/Partie sud) - New Edition - 01-DEC-2021 - World Geodetic System 1984

10-APR-2026

LNMD. 05-SEP-2025

Add underwater rock of unknown depth, dangerous to surface navigation
Rep (2025)
(See Chart 1, K13) 43°52'10.6"N 081°43'42.7"W
DFO(6605678-01)

2261 - Bayfield to/à Douglas Point - Sheet/Feuille 1 - New Edition - 20-MAY-2016 - World Geodetic System 1984

10-APR-2026

LNMD. 28-JUL-2023

Add underwater rock of unknown depth, dangerous to surface navigation
Rep (2025)
(See Chart 1, K13) 43°52'10.6"N 081°43'42.7"W
DFO(6605678-01)

4010 - Bay of Fundy / Baie de Fundy: Inner portion / partie intérieure - New Edition - 14-FEB-2003 - NAD 1983

17-APR-2026

LNMD. 02-JAN-2026

Delete wreck Wk with known depth of 4 fathoms, 1 foot
(See Chart 1, K26) 45°13'15.4"N 066°01'28.3"W
DFO(6312177-21)

4011 - Approaches to / Approches à Bay of Fundy / Baie de Fundy - New Edition - 03-JAN-2003 - NAD 1983

17-APR-2026

LNMD. 20-MAR-2026

Delete wreck Wk
(See Chart 1, K26) 45°13'40.6"N 066°01'37.0"W
DFO(6312177-21)

4015 - Sydney to / à Saint-Pierre - New Edition - 28-MAR-2003 - NAD 1983

03-APR-2026

LNMD. 20-MAR-2026

Add wreck WK with known depth of 28 fathoms
(See Chart 1, K26) 46°30'00.5"N 059°56'11.3"W
DFO(6312175-01)

4022 - Cabot Strait and approaches / Déroit de Cabot et les approches - New Edition - 17-JAN-2003 - NAD 1983

03-APR-2026

LNMD. 20-MAR-2026

Add wreck WK with known depth of 28 fathoms
(See Chart 1, K26) 46°30'00.5"N 059°56'11.3"W
DFO(6312175-01)

4045 - Sable Island Bank / Banc de l'Île de Sable to / au St. Pierre Bank / Banc de Saint-Pierre - New Edition - 10-OCT-2003 - NAD 1983

03-APR-2026

LNMD. 20-MAR-2026

Add wreck WK with known depth of 51 metres
(See Chart 1, K26) 46°30'00.5"N 059°56'11.3"W
DFO(6312175-01)

4116 - Approaches to / Approches à Saint John - New Edition - 31-AUG-2007 - NAD 1983

17-APR-2026

LNMD. 02-JAN-2026

Delete depth of 11.9 metres
(See Chart 1, I10) 45°12'52.3"N 066°01'29.8"W
DFO(6312177-03)

Add depth of 9.2 metres
(See Chart 1, I10) 45°12'55.2"N 066°01'24.7"W
DFO(6312177-05)

Add depth of 6 metres
(See Chart 1, I10) 45°12'51.7"N 066°01'15.5"W
DFO(6312177-09)

Replace depth of 7.9 metres with depth of 6.9 metres
(See Chart 1, I10) 45°12'42.5"N 066°01'18.0"W
DFO(6312177-12)

Delete depth of 9.2 metres
(See Chart 1, I10) 45°12'47.3"N 066°01'05.9"W
DFO(6312177-13)

Replace depth of 4.5 metres with depth of 5.3 metres
(See Chart 1, I10) 45°12'38.1"N 066°01'09.3"W
DFO(6312177-14)

Replace depth of 5 metres with depth of 4.9 metres
(See Chart 1, I10) 45°12'36.6"N 066°00'52.8"W
DFO(6312177-15)

Replace depth of 14.9 metres with depth of 13 metres
(See Chart 1, I10) 45°12'25.4"N 066°00'39.6"W
DFO(6312177-16)

Delete depth of 11.3 metres
(See Chart 1, I10) 45°13'03.3"N 066°02'08.3"W
DFO(6312177-19)

Add depth of 10.5 metres
(See Chart 1, I10) 45°13'06.7"N 066°02'09.4"W
DFO(6312177-20)

Delete wreck Wk with known depth of 7.6 metres
(See Chart 1, K26) 45°13'15.4"N 066°01'28.3"W
DFO(6312177-21)

4117 - Saint John Harbour and Approaches / et les approches - New Edition - 29-MAY-2009 - NAD 1983

17-APR-2026

LNM/D. 02-JAN-2026

Delete	depth of 14.3 metres (See Chart 1, I10)	45°12'41.1"N 066°01'55.2"W <i>DFO(6312177-01)</i>
Add	depth of 13.4 metres (See Chart 1, I10)	45°12'40.0"N 066°01'56.8"W <i>DFO(6312177-02)</i>
Delete	depth of 11.9 metres (See Chart 1, I10)	45°12'52.3"N 066°01'29.8"W <i>DFO(6312177-03)</i>
Add	depth of 10.8 metres (See Chart 1, I10)	45°12'48.8"N 066°01'26.7"W <i>DFO(6312177-04)</i>
Add	depth of 9.2 metres (See Chart 1, I10)	45°12'55.2"N 066°01'24.7"W <i>DFO(6312177-05)</i>
Delete	depth of 10 metres (See Chart 1, I10)	45°13'01.9"N 066°01'21.9"W <i>DFO(6312177-06)</i>
Add	depth of 9.7 metres (See Chart 1, I10)	45°13'00.0"N 066°01'22.4"W <i>DFO(6312177-07)</i>
Add	depth of 9.5 metres (See Chart 1, I10)	45°12'57.7"N 066°01'11.9"W <i>DFO(6312177-08)</i>
Add	depth of 6 metres (See Chart 1, I10)	45°12'51.7"N 066°01'15.5"W <i>DFO(6312177-09)</i>
Delete	depth of 7.9 metres (See Chart 1, I10)	45°12'44.4"N 066°01'19.9"W <i>DFO(6312177-10)</i>
Add	depth of 6.9 metres (See Chart 1, I10)	45°12'42.5"N 066°01'18.0"W <i>DFO(6312177-11)</i>
Replace	depth of 4.5 metres with depth of 5.3 metres (See Chart 1, I10)	45°12'38.1"N 066°01'09.3"W <i>DFO(6312177-14)</i>
Replace	depth of 5.2 metres with depth of 4.9 metres (See Chart 1, I10)	45°12'36.6"N 066°00'52.8"W <i>DFO(6312177-15)</i>
Add	depth of 19.2 metres (See Chart 1, I10)	45°12'18.4"N 066°01'01.7"W <i>DFO(6312177-17)</i>
Add	depth of 18.2 metres (See Chart 1, I10)	45°12'18.6"N 066°01'13.6"W <i>DFO(6312177-18)</i>

Delete wreck Wk with known depth of 7.6 metres, with legend PA
(See Chart 1, K26, B7) 45°13'15.4"N 066°01'28.3"W
DFO(6312177-21)

4367 - Flint Island to / à Cape Smokey - New Edition - 03-APR-2003 - NAD 1983
03-APR-2026

Add wreck WK with known depth of 28 fathoms
(See Chart 1, K26) 46°30'00.5"N 059°56'11.3"W
DFO(6312175-01)

4447 - Pomquet and Tracadie Harbours / Havres de Pomquet et Tracadie - New Edition - 07-SEP-2001 - NAD 1983
24-APR-2026

Add overhead power cable with vertical clearance of 69 feet
(See Chart 1, D22, D26.1) between 45°38'40.3"N 061°37'36.5"W
and 45°38'39.3"N 061°37'29.3"W
DFO(6312171-01)

4486 - Baie des Chaleurs / Chaleur Bay - New Edition - 19-FEB-1999 - NAD 1983
10-APR-2026

Delete light FI 5s 46ft
(See Chart 1, P1) 48°20'34.6"N 064°39'26.7"W
(Q2025089) LL(1392.7) DFO(6312178-01)

Delete rear range/leading light F 62ft with leading line and bearings [141° - 321°]
(See Chart 1, P20.2, Pa) 48°20'56.3"N 064°40'29.2"W
(Q2025092) LL(1396) DFO(6312178-02)

Delete front range/leading light F 33ft
(See Chart 1, P20.2) 48°20'50.6"N 064°40'21.8"W
(Q2025091) LL(1395) DFO(6312178-03)

4506 - Grévigieux Harbour and / et Aiguillettes Harbour - New Edition - 05-DEC-2003 - NAD 1983
10-APR-2026

Add red starboard hand lighted spar buoy FI R, marked KEN2
(See Chart 1, Qb) 50°43'27.7"N 056°06'24.0"W
(N2025042) LL(250.2) DFO(6312141-01)

4615 - Harbours in Placentia Bay / Havres dans Placentia Bay: Petit forte to / à Broad Cove Head - New Edition - 20-AUG-1999 - NAD 1983
10-APR-2026

Add fish haven
(See Chart 1, K46.1) 47°23'26.9"N 054°40'03.7"W
DFO(6312174-01)

4619 - Continuation A - New Edition - 20-NOV-1998 - NAD 1983
03-APR-2026

Delete light QR
(See Chart 1, P1) 47°23'43.0"N 054°35'15.0"W
(N2025049) LL(51.69) DFO(6312158-01)

Add light FI R
(See Chart 1, P1) 47°23'46.0"N 054°35'16.8"W
(N2025049) LL(51.69) DFO(6312158-02)

4622 - Cape St Mary's to / à Argentic Harbour and / et Jude Island - New Edition - 20-DEC-2019 - NAD 1983

03-APR-2026

LN/M/D. 23-DEC-2022

Delete light QR
(See Chart 1, P1) 47°23'42.9"N 054°35'14.6"W
(N2025049) LL(51.69) DFO(6312158-01)

Add light FI R
(See Chart 1, P1) 47°23'45.8"N 054°35'16.6"W
(N2025049) LL(51.69) DFO(6312158-02)

4700 - Belle Isle to / à Resolution Island - New Edition - 21-MAR-2003 - Unknown

03-APR-2026

LN/M/D. 19-APR-2024

Delete subsurface ocean data acquisition system ODAS/SADO with known
depth of 135 fathoms 60°28'24.8"N 061°15'59.5"W
(See Chart 1, L25) DFO(6312173-01)

4921 - L'Anse-à-Beaufils - New Edition - 02-DEC-2016 - NAD 1983

03-APR-2026

LN/M/D. 20-MAR-2026

Amend 0,9 m (2023) to read 0,7 m (2025) 48°28'21.2"N 064°18'33.9"W
(See Chart 1, I22) DFO(6411378-01)

Amend 1,3 m (2023) to read 1,3 m (2025) 48°28'20.5"N 064°18'31.9"W
(See Chart 1, I22) DFO(6411378-02)

Amend 2,2 m (2023) to read 2,2 m (2025) 48°28'18.8"N 064°18'26.4"W
(See Chart 1, I22) DFO(6411378-03)

Amend 1,1 m (2023) to read 1,1 m (2025) 48°28'17.3"N 064°18'25.9"W
(See Chart 1, I22) DFO(6411378-04)

Amend 2,9 m (2023) to read 2,7 m (2025) 48°28'20.1"N 064°18'20.3"W
(See Chart 1, I22) DFO(6411378-05)

Add obstruction which covers and uncovers with drying height of 0,2 metres 48°28'15.7"N 064°18'25.9"W
(See Chart 1, K41) DFO(6411378-06)

4921 - Newport-Point - New Edition - 02-DEC-2016 - NAD 1983

03-APR-2026

LN/M/D. 20-MAR-2026

Affix patch 48°17'04.8"N 064°43'14.8"W
Download Patch - https://www.notmar.gc.ca/chsftp/patches/4921_6411361_2_202603051030.pdf
DFO(6411361-02)

4921 - Port-Daniel-Gascons - New Edition - 02-DEC-2016 - NAD 1983

03-APR-2026

LN/M/D. 20-MAR-2026

Amend 1,5m (2023) to read 1,5m (2025) 48°10'49.4"N 064°57'42.1"W
(See Chart 1, I22) DFO(6411379-01)

4921 - Quai / Wharf Newport-Point - New Edition - 02-DEC-2016 - NAD 1983

03-APR-2026

LNLM/D. 20-MAR-2026

Affix patch 48°17'04.8"N 064°43'15.5"W
Download Patch - https://www.notmar.gc.ca/chsftp/patches/4921_6411361_1_202603051029.pdf
DFO(6411361-01)

5351 - Payne Bay and Approaches - New Edition - 27-JUN-2014 - NAD 1983

24-APR-2026

Delete depth of 5 fathoms 2 feet 59°59'34.9"N 069°37'30.3"W
(See Chart 1, I10)
DFO(6605681-01)

Add depth of 4 fathoms 5 feet 59°59'33.5"N 069°37'35.9"W
(See Chart 1, I10)
DFO(6605681-02)

5352 - Payne Bay and River (Tuvalik Point to Basking Island) - New Edition - 29-MAY-2015 - Unknown

24-APR-2026

LNLM/D. 27-DEC-2024

Delete depth of 5 fathoms 2 feet 59°59'31.9"N 069°37'42.3"W
(See Chart 1, I10)
DFO(6605681-03)

Add depth of 4 fathoms 5 feet 59°59'32.7"N 069°37'38.7"W
(See Chart 1, I10)
DFO(6605681-04)

5452 - Diana Bay - New Edition - 08-JUL-2005 - NAD 1983

10-APR-2026

LNLM/D. 16-FEB-2024

Reposition light and radar reflector, marked Fl 6s 270ft 8M from 61°04'41.8"N 069°33'28.4"W
(See Chart 1, P1) to 61°04'42.7"N 069°33'16.2"W
(A2025021) LL(2560) DFO(6605467-01)

7511 - Resolute Bay - New Edition - 23-OCT-2015 - World Geodetic System 1984

10-APR-2026

Add depth of 1.6 metres 74°40'53.3"N 094°53'01.1"W
(See Chart 1, I10)
This notice affects Electronic Navigational Chart: CA573399
DFO(6605673-01)

Add depth of 1.8 metres 74°40'48.5"N 094°53'00.6"W
(See Chart 1, I10)
This notice affects Electronic Navigational Chart: CA573399
DFO(6605673-02)

Add depth of 4.6 metres 74°40'48.8"N 094°52'47.6"W
(See Chart 1, I10)
This notice affects Electronic Navigational Chart: CA573399
DFO(6605673-03)

7565 - Clyde Inlet to à Cape Jameson - New Edition - 03-JUN-2022 - World Geodetic System 1984

17-APR-2026

LNLM/D. 19-JUL-2024

Delete obstruction with known depth of 149 metres 71°08'07.6"N 070°48'06.3"W
(See Chart 1, K41)
DFO(6605679-01)

7621 - Amundsen Gulf - New Edition - 25-FEB-2022 - NAD 1983

10-APR-2026

LNMD. 05-DEC-2025

Reposition beacon, marked Bn R with radar reflector
(See Chart 1, Q10)
This notice affects Electronic Navigational Chart: CA372007
from 71°57'19.8"N 125°14'24.0"W
to 71°57'20.5"N 125°14'23.3"W
(A2025052) DFO(6605582-02)

Add obstruction, depth unknown Rep (2026)
(See Chart 1, K40)
69°56'00.7"N 123°51'01.5"W
DFO(6605676-01)

Add obstruction, depth unknown Rep (2026)
(See Chart 1, K40)
69°54'00.4"N 123°59'01.2"W
DFO(6605676-02)

Add obstruction, depth unknown Rep (2026)
(See Chart 1, K40)
69°48'35.5"N 124°07'25.3"W
DFO(6605676-04)

7621 - Sachs Harbour - New Edition - 25-FEB-2022 - NAD 1983

10-APR-2026

LNMD. 05-DEC-2025

Amend Bn to read Bn R against beacon
(See Chart 1, Q80, Q81)
This notice affects Electronic Navigational Chart: CA372007
71°57'18.6"N 125°14'08.9"W
(A2025052) DFO(6605582-01)

Reposition beacon, marked Bn R with radar reflector
(See Chart 1, Q10)
This notice affects Electronic Navigational Chart: CA372007
from 71°57'19.8"N 125°14'24.0"W
to 71°57'20.5"N 125°14'23.3"W
(A2025052) DFO(6605582-02)

7665 - Franklin Bay and/et Darnley Bay - New Chart - 13-JUN-1986 - NAD 1927

10-APR-2026

LNMD. 12-SEP-2025

Add obstruction, depth unknown Rep (2026)
(See Chart 1, K40)
69°55'59.9"N 123°50'52.4"W
DFO(6605676-01)

Add obstruction, depth unknown Rep (2026)
(See Chart 1, K40)
69°53'59.6"N 123°58'52.1"W
DFO(6605676-02)

Delete depth of 33 metres
(See Chart 1, I10)
69°48'32.2"N 124°07'25.8"W
DFO(6605676-03)

Add obstruction, depth unknown Rep (2026)
(See Chart 1, K40)
69°48'34.7"N 124°07'16.2"W
DFO(6605676-04)

8046 - Button Islands to / à Cod Island - New Edition - 23-MAY-2003 - Unknown

03-APR-2026

LNMD. 25-APR-2025

Delete subsurface ocean data acquisition system ODAS/SADO with known
depth of 247 metres
(See Chart 1, L25)
60°28'24.8"N 061°15'59.5"W
DFO(6312173-01)

Section 3: Radio Aids to Marine Navigation Corrections

*416/26 Radio Aids to Marine Navigation 2026 (Atlantic, St. Lawrence, Great Lakes, Lake Winnipeg, Arctic and Pacific)

Page 1-1

ADD AS FOLLOWS:

1.1.2 VHF Data Exchange System (VDES)

VDES is an international initiative to modernize marine VHF radio, particularly the Automatic Identification System. It will allow ships and shore stations to share more digital data. Canada is planning for the future introduction of VDES beginning around 2030. Mariners should be aware that some existing duplex VHF allocations may be retired or reassigned.

Page 1-3

DELETE THE FOLLOWING TABLE:

Table 1-2 - Maritime Mobile Safety and Communication Frequencies VHF

Mariners in Canadian waters must confirm their radios are in Canadian channel mode.

New Channel Designator	Old Channel Designator	Frequencies (MHz)		Class of Emission	Remarks
		Ship	Coast		
60	60	156.025	160.625	-	-
01	01	156.050	160.650	-	-
1001	01A	156.050	156.050	-	-
61	61	156.075	160.675	F3E	DFO/CCG liaison. Commercial fishing.
1061	61A	156.075	156.075	F3E	DFO/CCG liaison. Commercial fishing.
02	02	156.100	160.700	-	Public Correspondence.
62	62	156.125	160.725	F3E	DFO/CCG liaison. Commercial fishing.
1062	62A	156.125	156.125	F3E	DFO/CCG liaison. Commercial fishing.
03	03	156.150	160.750	-	-
63	63	156.175	160.775	-	-
1063	63A	156.175	156.175	-	-
1004	04A	156.200	156.200	F3E	DFO/CCG liaison. Commercial fishing.
64	64	156.225	160.825	-	-
1064	64A	156.225	156.225	F3E	Commercial fishing.
05	05	156.250	160.850	-	-
1005	05A	156.250	156.250	F3E	VTS
65	65	156.275	160.875	-	-
1065	65A	156.275	156.275	-	SAR/Safety.

New Channel Designator	Old Channel Designator	Frequencies (MHz)		Class of Emission	Remarks
		Ship	Coast		
06	06	156.300	156.300	F3E	SAR/Safety Communications between ships and aircraft. Intership.
1006	06A	160.900	160.900	G2B	Experimental – AIS Systems.
66	66	156.325	160.925	-	-
1066	66A	156.325	156.325	F3E	-
07	07	156.350	160.950	-	-
1007	07A	156.350	156.350	F3E	-
67	67	156.375	156.375	F3E	SAR/Safety Communications between ships and aircraft. Commercial fishing.
08	08	156.400	156.400	F3E	Intership.
...

Notes:

Reference VHF:

“A” following a channel number means Simplex Operation on the ship station transmitting frequency.

“B” following a channel number means ship stations receive only on the higher coast station transmission frequency.

ISED will be consulting with all Canadians on the outcome of the WRC-19 before implementing changes to RBR-2 and this table.

REPLACE WITH THE FOLLOWING:

Table 1-2 - Maritime Mobile Safety and Communication Frequencies VHF

Mariners in Canadian waters must confirm their radios are in Canadian channel mode.

New Channel Designator	Old Channel Designator	Frequencies (MHz) Ship Transmit	Frequencies (MHz) Ship Receive	Nature of Service and Type of Traffic	Remarks
01	01	156.050	160.650	Public Correspondence	Public Correspondence.
02	02	156.100	160.700	Public Correspondence	Public Correspondence.
03	03	156.150	160.750	Public Correspondence	Public Correspondence.
04A	1004	156.200	156.200	Intership, Ship/Shore, Commercial, Safety	DFO/CCG liaison. Commercial fishing.
1005	05A	156.250	156.250	Ship Movement	VTS.
06	06	156.300	156.300	Intership, Commercial, Non-Commercial, Safety	SAR/Safety Communications between ships and aircraft. Intership.
1007	07A	156.350	156.350	Intership, Ship/Shore, Commercial	-
08	08	156.400	156.400	Intership, Commercial, Safety	Intership.

Notices to Mariners – Monthly Eastern Edition
Section 3: Radio Aids to Marine Navigation Corrections

New Channel Designator	Old Channel Designator	Frequencies (MHz) Ship Transmit	Frequencies (MHz) Ship Receive	Nature of Service and Type of Traffic	Remarks
09	09	156.450	156.450	Intership, Ship/Shore, Commercial, Non-Commercial, Safety, Ship Movement	VTS. Intership.
10	10	156.500	156.500	Intership, Ship/Shore, Commercial, Non-Commercial, Safety, Ship Movement	VTS. Intership.
11	11	156.550	156.550	Intership, Ship/Shore, Commercial, Non-Commercial, Safety, Ship Movement	VTS. Pilotage.
12	12	156.600	156.600	Intership, Ship/Shore, Commercial, Non-Commercial, Safety, Ship Movement	VTS. Port Operations. Pilotage.
13	13	156.650	156.650	Intership, Commercial, Non-Commercial, Ship Movement	VTS. Bridge to Bridge navigational traffic.
14	14	156.700	156.700	Intership, Ship/Shore, Commercial, Non-Commercial, Safety, Ship Movement	VTS. Port Operations. Pilotage.
15	15	156.750	156.750	Intership, Ship/Shore, Commercial, Non-Commercial, Safety, Ship Movement	VTS. Intership. Low power only.
16	16	156.800	156.800	Safety	International Distress and Safety (RT).
17	17	156.850	156.850	Intership, Ship/Shore, Commercial, Non-Commercial, Safety, Ship Movement	Low power only.
1018	18A	156.900	156.900	Intership, Ship/Shore, Commercial	Towing – BC Coast area.
1019	19A	156.950	-	-	DFO/CCG liaison. CCG MSI Broadcast.
20	20	157.000	161.600	Ship/Shore, Safety, Ship Movement	Port operations only with 1 watt maximum power.
1021	21A	157.050	-	Intership, Ship/Shore	DFO/CCG liaison.
2021	21B		161.650	Safety	CCG CMB. CCG MSI Broadcast.
1022	22A	157.100	157.100	Intership, Ship/Shore, Commercial, Non-Commercial	DFO/CCG liaison.
23	23	157.150	161.750	Ship/Shore, Public Correspondence	Public Correspondence.

Notices to Mariners – Monthly Eastern Edition
Section 3: Radio Aids to Marine Navigation Corrections

New Channel Designator	Old Channel Designator	Frequencies (MHz) Ship Transmit	Frequencies (MHz) Ship Receive	Nature of Service and Type of Traffic	Remarks
2023	23B	-	161.750	Safety	CCG CMB. CCG MSI Broadcast.
24	24	157.200	161.800	Public Correspondence	Public Correspondence.
1024	24A	157.200	-	-	-
25	25	157.250	161.850	Public Correspondence	Public Correspondence.
2025	25B	-	161.850	Public Correspondence	Public Correspondence.
26	26	157.300	161.900	Public Correspondence	Public Correspondence.
27	27	157.350	161.950	Public Correspondence	Public Correspondence.
28	28	157.400	162.000	Public Correspondence	Public Correspondence.
60	60	156.025	160.625	Ship/Shore, Public Correspondence	Public Correspondence
1061	61A	156.075	156.075	Intership, Ship/Shore, Commercial	DFO/CCG liaison. Commercial fishing.
1062	62A	156.125	156.125	Intership, Ship/Shore, Commercial	DFO/CCG liaison. Commercial fishing.
1063	63A	156.175	156.175	Intership, Ship/Shore, Commercial	Tow Boats - BC Coast area.
64	64	156.225	160.825	Ship/Shore, Public Correspondence	Public Correspondence
1064	64A	156.225	156.225	Intership, Ship/Shore, Commercial	Commercial fishing.
1065	65A	156.275	156.275	Safety, Intership, Ship/Shore, Commercial, Non-Commercial	SAR/Safety.
1066	66A	156.325	156.325	Safety, Intership, Ship/Shore, Commercial, Non-Commercial	See RBR-2 restrictions .
67	67	156.375	156.375	Safety, Intership, Ship/Shore, Commercial, Non-Commercial	SAR/Safety Communications between ships and aircraft. Intership.
68	68	156.425	156.425	Intership, Ship/Shore, Non-Commercial	For marinas, yacht clubs and pleasure craft.
69	69	156.475	156.475	Intership, Ship/Shore, Commercial, Non-Commercial	Commercial fishing.
70	70	156.525	156.525	Safety	Digital Selective Calling.
71	71	156.575	156.575	Safety, Intership, Ship/Shore, Ship Movement, Commercial, Non-Commercial	VTS.
72	72	156.625	156.625	Intership, Commercial, Non-Commercial	Intership.

Notices to Mariners – Monthly Eastern Edition
Section 3: Radio Aids to Marine Navigation Corrections

New Channel Designator	Old Channel Designator	Frequencies (MHz) Ship Transmit	Frequencies (MHz) Ship Receive	Nature of Service and Type of Traffic	Remarks
73	73	156.675	156.675	Safety, Intership, Ship/Shore, Commercial, Non-Commercial	SAR/Safety Communications between ships and aircraft. Commercial fishing.
74	74	156.725	156.725	Intership, Ship/Shore, Ship Movement, Commercial, Non-Commercial	VTS.
75	75	156.775	156.775	Intership, Ship/Shore, Ship Movement, Commercial	1 watt maximum power. Long Range AIS.
76	76	156.825	156.825	Intership, Ship/Shore, Ship Movement, Commercial	1 watt maximum power. Long Range AIS.
77	77	156.875	156.875	Safety, Intership, Ship/Shore, Ship Movement	Refer to RBR-2.
1078	78A	156.925	156.925	Intership, Ship/Shore, Commercial	Intership for fishing vessels.
1079	79A	156.975	156.975	Intership, Ship/Shore, Commercial	Intership for fishing vessels.
1080	80A	157.025	157.025	Intership, Ship/Shore, Commercial	Intership for whale watching.
1081	81A	157.075	157.075	Safety, Intership, Ship/Shore	DFO/CCG liaison.
1082	82A	157.125	157.125	Intership, Ship/Shore	DFO/CCG liaison.
1083	83A	157.175	157.175	Intership, Ship/Shore	DFO/Canadian Coast Guard and other Government agencies.
2083	83B	-	161.775	Safety	CCG CMB. CCG MSI Broadcast.
84	84	157.225	161.825	Ship/Shore, Public Correspondence	Public Correspondence.
85	85	157.275	161.875	Ship/Shore, Public Correspondence	Public Correspondence.
86	86	157.325	161.925	Ship/Shore, Public Correspondence	Public Correspondence.
87	87	157.375	157.375	Intership, Ship Movement, Non-Commercial	Port operations. Ship movement.
88	88	157.425	157.425	Intership, Ship Movement, Non-Commercial	Port operations. Ship movement.
2087	87B	161.975	161.975	AIS	AIS – 1.
2088	88B	162.025	162.025	AIS	AIS – 2.
WX1	WX1	-	162.550	Safety	CCG CMB.

New Channel Designator	Old Channel Designator	Frequencies (MHz) Ship Transmit	Frequencies (MHz) Ship Receive	Nature of Service and Type of Traffic	Remarks
WX2	WX2	-	162.400	Safety	CCG CMB.
WX3	WX3	-	162.475	Safety	CCG CMB.
2006 AMRD	2006 AMRD	160.900	160.900	Experimental AIS	Experimental AIS.

Notes:

Reference VHF:

“A” following a channel number means Simplex Operation on the ship station transmitting frequency.

“B” following a channel number means ship stations receive only on the higher coast station transmission frequency.

ISED will be consulting with all Canadians on the outcome of the WRC-19 before implementing changes to RBR-2 and this table.

ISED RBR-2 Technical Requirements for the Operation of Mobile Stations in the Maritime Service defines the frequencies and use of marine VHF channels in Canada. In case of discrepancies, please refer to [RBR-2](#).

VDES (VHF Data Exchange System): In order to comply with the [Final Acts WRC-19](#), the following channels will become digital use only after January 1, 2030 in Canadian waters: Ch24, Ch25, Ch26, Ch27, Ch28, Ch84, Ch85 and Ch86.

Page 4-48

AMEND AS FOLLOWS

4.3.1.2 Information Updates

Notices to Mariners contain information which serves to correct charts and related publications. Up-to-date information is available to vessels inbound for Canadian waters on any changes which have occurred between the date of issue of the most recent monthly edition of Canadian Notices to Mariners held on board. Vessels wishing to avail themselves of this service should send their request directly to Eastern VTS (formerly *ECAREG Canada*), Northern VTS (formerly *NORDREG Canada*) or vts.rupert@innav.gc.ca. Requests may also be routed via any MCTS Centre as listed in [Part 2](#) of this document.

When making this request, the following information shall be included:

ship's name and call sign;

present position, destination and intended route;

most recent monthly edition of Canadian Notices to Mariners held on board; and

list of recent Navigational Warnings held on board.

Ice information, ice routing and icebreaker assistance may be obtained through ~~the~~ Eastern Canada Vessel Traffic **System Services** (formerly known as ECAREG CANADA) or ~~the~~ Northern Canada Vessel Traffic Services (formerly known as NORDREG CANADA). Refer to Notice Number 6 of the Annual Edition of Notices to Mariners or the publication "Ice Navigation in Canadian Waters" for additional information.

Section 4: Canadian Sailing Directions Corrections

The following **Canadian Sailing Directions** volumes have recently been updated on the [Canadian Hydrographic Service website](#).

No.	Title
Atlantic Coast	
ATL 101	Newfoundland, Northeast and East Coasts
ATL 104	Cape North to Cape Canso (including Bras d'Or Lake)
ATL 110	St. Lawrence River, Cap Whittle / Cap Gaspé to Les Escoumins and Anticosti Island
Northern Canada	
ARC 400	General Information, Northern Canada
ARC 402	Eastern Arctic

Each volume includes a section entitled "Record of Changes" which lists all updates that are incorporated during the current calendar year.

Section 5: List of Lights, Buoys and Fog Signals Corrections

The amendments are highlighted and deletions are crossed out. For general and region-specific information on the List of Lights, click on the following links: [Newfoundland and Labrador Coast](#), [Atlantic Coast](#), [Inland Waters](#), [Pacific Coast](#) and [Arctic Coast](#).

No. ----- Intl No.	Name ----- RACON	Location ----- Latitude N. Longitude W.	Light Characteristics	Focal Height Above Water (m)	Nominal Range (NM)	Description ----- Height of Structure Above Ground Level (m)	Remarks ----- Audible Signals ----- AIS
--------------------------	------------------------	--	--------------------------	--	--------------------------	--	---

ATLANTIC COAST

ST. LAWRENCE RIVER, RIVIÈRE DU LOUP - SOREL (LL 1823.8 – 2185.1)

2150.2	Battures Saint-François light buoy S92	Lac Saint-Pierre, main channel. 46 10 28.1 072 55 34.3	FI R 4s	Red, pillar, marked "S92".	Year round. (Winter spar.)
--------	--	--	---------	-------	-------	----------------------------	-------------------------------

ST. LAWRENCE RIVER, SOREL - PORT DE MONTRÉAL (LL 2272.2 – 2384)

2280.6	Île Saint-Ours light buoy M10	Montreal main channel. 45 55 46.2 073 12 54.2	FI R 4s	Red, pillar, marked "M10".	Year round. (Winter spar.)
2294.5	Contrecoeur light buoy M37	Montreal main channel. 45 52 31.5 073 15 02.9	Q G 1s	Green, pillar, marked "M37".	Year round. (Winter spar.)

INLAND WATERS

ST. CLAIR RIVER (LL 731.2 – 766.8)

763	Stag Island North End light buoy AM3						Delete from list.
-----	--------------------------------------	--	--	--	--	--	-------------------

LAKE SUPERIOR (LL 1082 – 1161)

1132	Hare Island light buoy A2	W. of Thunder Cape. 48 17 55.1 088 59 13.3	FI R 4s	Red, spar, marked "A2".	Year round (YRLS).
------	---------------------------	--	---------	-------	-------	-------------------------	--------------------